

| | | |
|--|------------------------|---|
| WAAS CH 87027 W32A | APP CRS 322° | Rwy Idg 3510 TDZE 545 Apt Elev 556 |
|--|------------------------|---|

RNAV (GPS) RWY 32

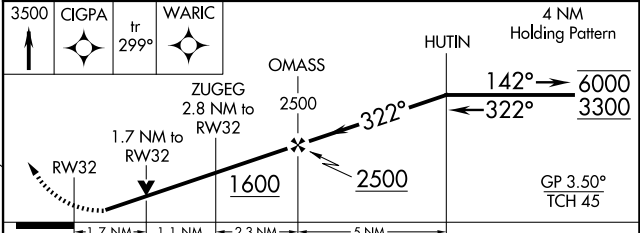
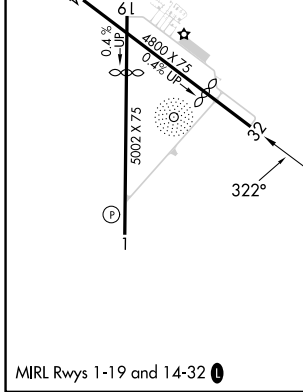
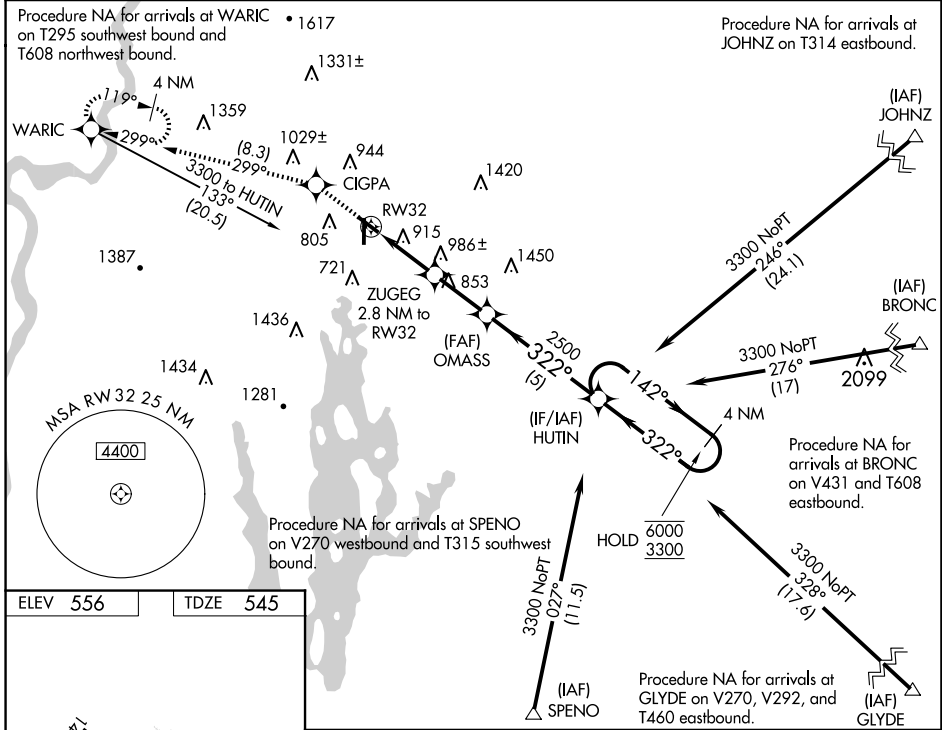
ORANGE MUNI (O.R.E.)

RNP APCH - GPS.

For uncompensated Baro-VNAV systems, LNAV/VNAV NA below -16°C or above 54°C. Rwy 32 helicopter visibility reduction below 3/4 SM NA. Circling Rwy 1, 19 NA at night. Baro-VNAV and VDP NA when using Keene altimeter setting. When local altimeter setting not received, use Keene altimeter setting and increase LPV DA to 928 and all visibilities 1/8 SM, LNAV/VNAV DA to 1343 and all visibilities 1/2 SM, and all MDAs 60 feet and LNAV visibility Cat B 1/4 SM, and Circling visibility Cat B 1/2 SM.

MISSED APPROACH: Climb to 3500 direct CIGPA and on track 299° to WARIC and hold, continue climb-in-hold to 3500.

| | | |
|------------------------|--------------------------------------|---------------------------------|
| ASOS 135.675 | BOSTON CENTER 123.75 338.2 | UNICOM 122.8 (CTAF) 0 |
|------------------------|--------------------------------------|---------------------------------|



| CATEGORY | A | B | C | D |
|--------------|-----------------------|-----------------------|---|----|
| LPV DA | 873-1 | 328 (400-1) | | NA |
| LNAV/VNAV DA | 1288-2 | 743 (800-2) | | NA |
| LNAV MDA | 1240-1 | 695 (700-1) | | NA |
| CIRCLING | 1260-1 704 (800-1) | 1320-1 764 (800-1) | | NA |

NE-1, 20 FEB 2025 to 20 MAR 2025

NE-1, 20 FEB 2025 to 20 MAR 2025