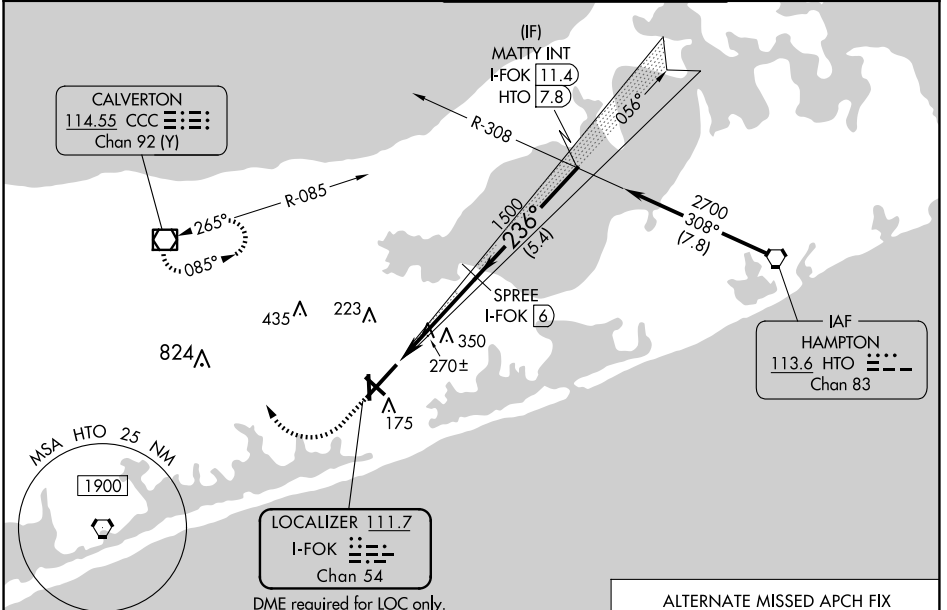


LOC/DME I-FOK <b>111.7</b> Chan <b>54</b>	APP CRS <b>236°</b>	Rwy Idg TDZE <b>66</b> Apt Elev <b>66</b>	<b>9002</b> <b>66</b> <b>66</b>
-------------------------------------------------	------------------------	-------------------------------------------------	---------------------------------------

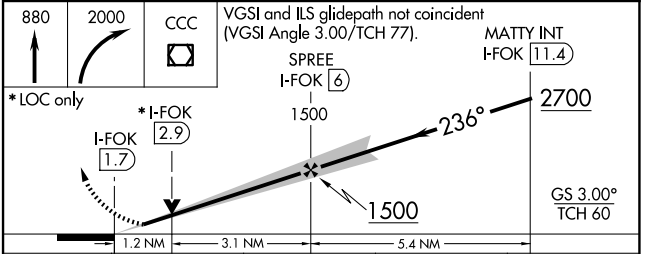
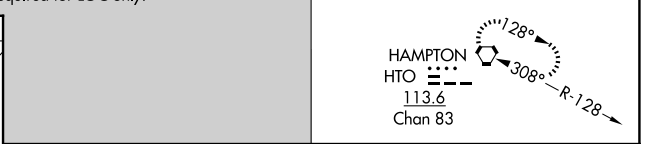
# ILS or LOC RWY 24

FRANCIS S GABRESKI (F'OK)

<p>Circling Rwy 15 NA at night.</p>	<p>MALS R</p>	<p>MISSED APPROACH: Climb to 880 then climbing right turn to 2000 direct CCC VOR/DME and hold.</p>	
		ASOS <b>119.925</b>	NEW YORK APP CON <b>125.975 343.65</b>



ELEV 66	TDZE 66
<p>HIRL Rwy 6-24 (L)</p> <p>MIRL Rwy 15-33 (L)</p> <p>REL Rwys 6, 15, and 33 (L)</p> <p>FAF to MAP 4.3 NM</p>	
Knots	60 90 120 150 180
Min:Sec	4:18 2:52 2:09 1:43 1:26



CATEGORY	A	B	C	D
S-ILS 24	266-½ 200 (200-½)			
S-LOC 24	520-½	454 (500-½)	520-¾	454 (500-¾)
CIRCLING	600-1 534 (600-1)	620-1 554 (600-1)	700-1¾ 634 (700-1¾)	740-2¼ 674 (700-2¼)

NE-2, 20 FEB 2025 to 20 MAR 2025

NE-2, 20 FEB 2025 to 20 MAR 2025