

TACAN FOK Chan <b>47</b> (111.0)	APP CRS <b>063°</b>	Rwy Idg TDZE <b>57</b> Apt Elev <b>66</b>	<b>9002</b>
--	------------------------	---	-------------

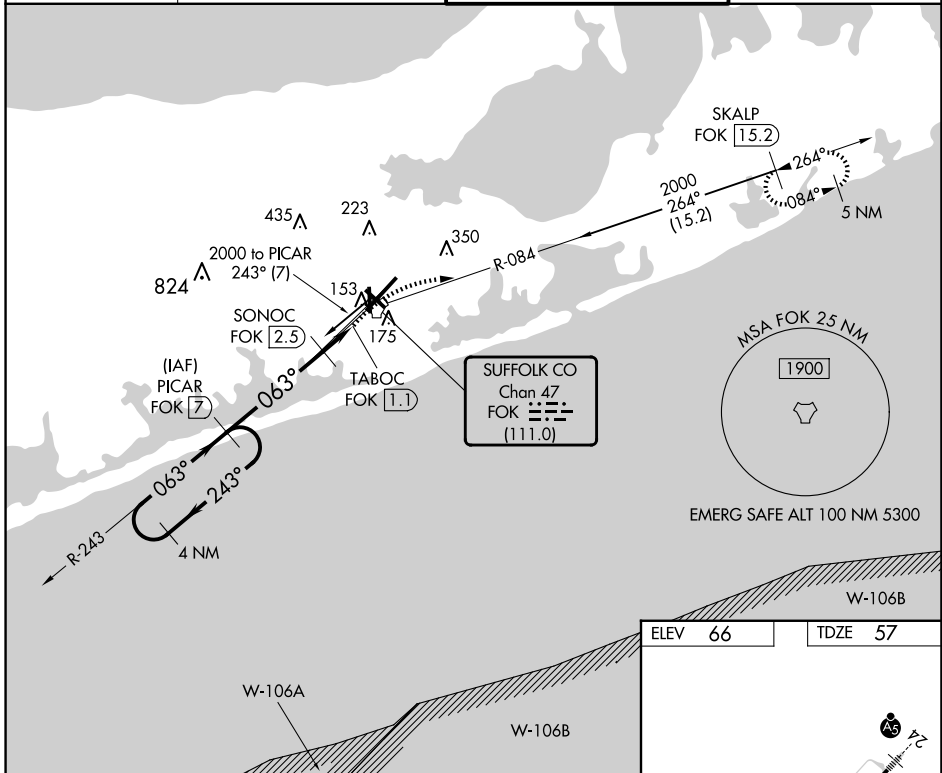
# TACAN RWY 6

FRANCIS S GABRESKI (F'OK)

**⚠** Helicopter visibility reduction below 3/4 SM not authorized. When local altimeter setting not received, use Shirley altimeter setting and increase all MDAs 40 feet and S-6 Cat C/D visibility 1/8 SM and Circling Cat C visibility 1/4 SM. Circling Rwy 1.5 NA at night.

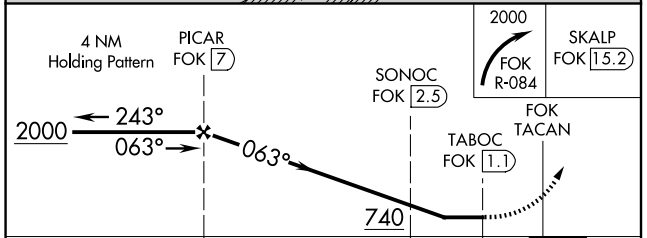
**MISSED APPROACH:** Climbing right turn to 2000 on FOK TACAN R-084 to SKALP/15.2 DME and hold.

ASOS <b>119.925</b>	NEW YORK APP CON <b>125.975 343.65</b>	SUFFOLK COUNTY TOWER ★ <b>125.3 (CTAF) 0 236.6</b>	GND CON <b>121.8 225.4</b>
------------------------	---	---	-------------------------------

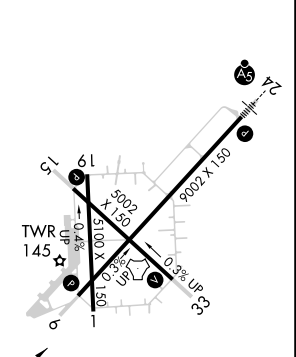


NE-2, 20 FEB 2025 to 20 MAR 2025

NE-2, 20 FEB 2025 to 20 MAR 2025



ELEV 66	TDZE 57
---------	---------



CATEGORY	A	B	C	D
S-6		420-1	363 (400-1)	
CIRCLING	600-1 534 (600-1)	620-1 554 (600-1)	700-1 3/4 634 (700-1 3/4)	740-2 1/4 674 (700-2 1/4)

HIRL Rwy 6-24 (1)  
 MIRL Rwy 15-33 (1)  
 REIL Rws 6, 15, and 33 (1)