

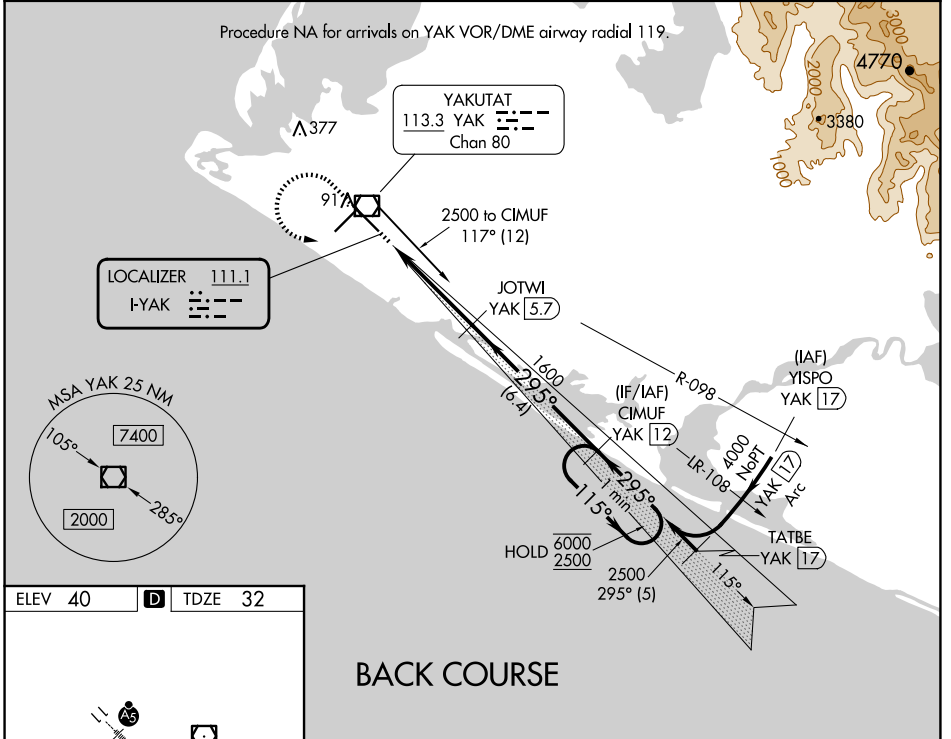
LOC I-YAK <b>111.1</b>	APP CRS <b>295°</b>	Rwy ldg <b>7732</b> TDZE <b>32</b> Apt Elev <b>40</b>
---------------------------	------------------------	---

# LOC BC RWY 29

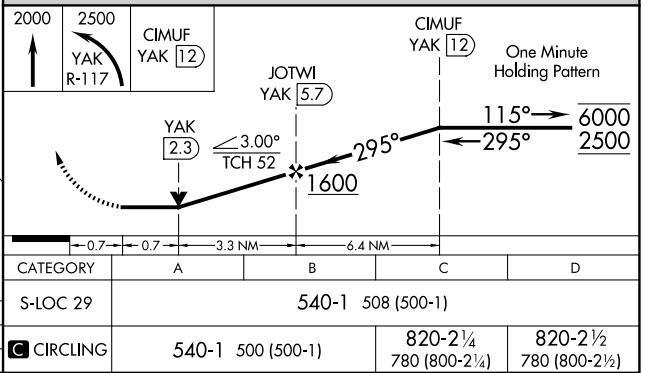
YAKUTAT (YAK) (PAYA)

DME required.	MALS R	MISSED APPROACH: Climb to 2000 then climbing left turn to 2500 on YAK VOR/DME R-117 to CIMUF/YAK 12 DME and hold.
<p><b>▼</b> Circling Rwy 20 NA at night. Rwy 29 helicopter visibility reduction below 3/4 SM NA. Inop table does not apply to S-LOC 29 Cats A and B. When Yakutat altimeter setting not received, procedure NA. For inop ALS, increase S-LOC 29 Cats C and D visibility to 1 3/8 SM. DME from YAK VOR/DME. DME use requires simultaneous reception of I-YAK and YAK DME.</p>		

ASOS <b>135.75</b>	ANCHORAGE CENTER <b>119.0 263.1</b>	JUNEAU RADIO <b>123.6 (CTAF) 0</b>
-----------------------	--	---------------------------------------



ELEV 40	<b>D</b>	TDZE 32			
REIL Rws 2 and 20					
HIRL Rws 2-20 and 11-29					
FAF to MAP 4.1 NM					
Knots	60	90	120	150	180
Min:Sec	4:06	2:44	2:03	1:38	1:22



AK, 20 FEB 2025 to 17 APR 2025

AK, 20 FEB 2025 to 17 APR 2025