

VOR/DME YAK 113.3 Chan 80	APP CRS 308°	Rwy Idg 7732 TDZE 26 Apt Elev 33
--	------------------------	---

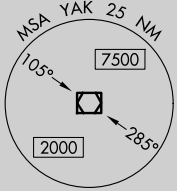
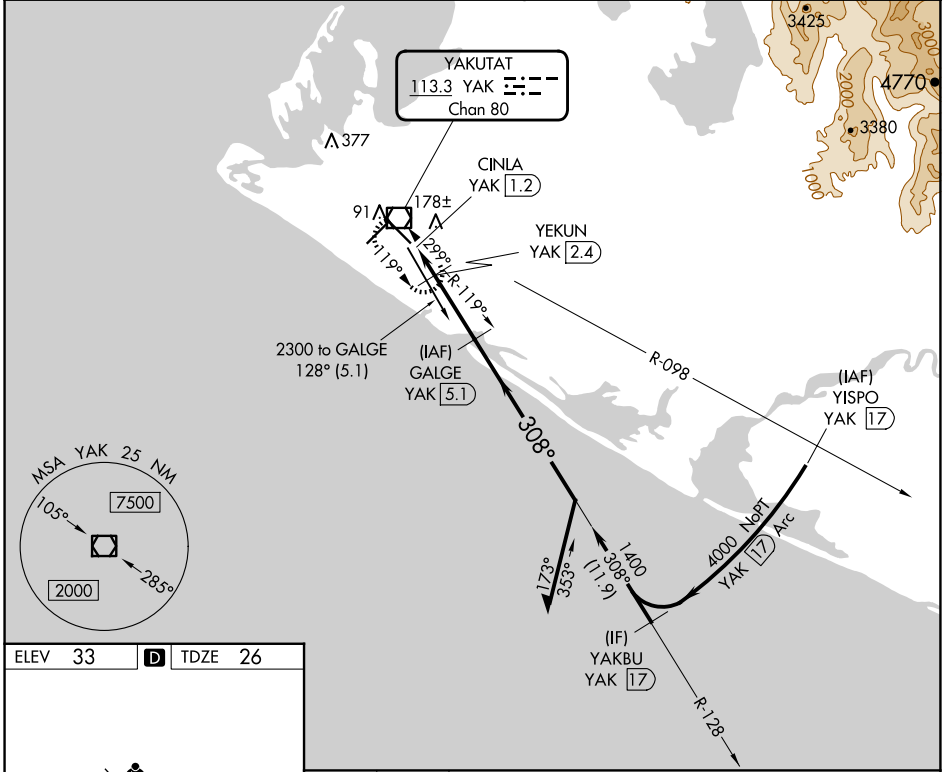
VOR/DME RWY 29 YAKUTAT (YAK) (PAYA)

▼ Inop table does not apply to Cats A/B.
▲ For inop MALSR, increase Cats C/D visibility to 1½ mile.

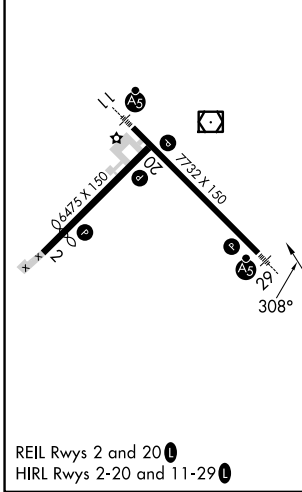
MALSR

MISSED APPROACH: Climb to 2000 direct YAK VOR/DME and hold, continue climb-in-hold to 2000.

ASOS 135.75	ANCHORAGE CENTER 119.0 263.1	JUNEAU RADIO 123.6 (CTAF) 0
-----------------------	--	---------------------------------------



ELEV 33	D	TDZE 26
---------	----------	---------



2000 YAK VGSI and descent angles not coincident (VGSI Angle 3.00/TCH 51).
 Remain within 10 NM

YAK VOR/DME CINLA YAK 1.2 YEKUN YAK 2.4 GALGE YAK 5.1

3.00° TCH 52

540 1400 1800

0.3 1.2 NM 2.7 NM

CATEGORY	A	B	C	D
S-29	440-1	414 (500-1)		
<input checked="" type="checkbox"/> CIRCLING	500-1 467 (500-1)	520-1 487 (500-1)	620-1½ 587 (600-1½)	720-2¼ 687 (700-2¼)

AK, 20 FEB 2025 to 17 APR 2025

AK, 20 FEB 2025 to 17 APR 2025