

(EYAKS6.EYAKS) 23334

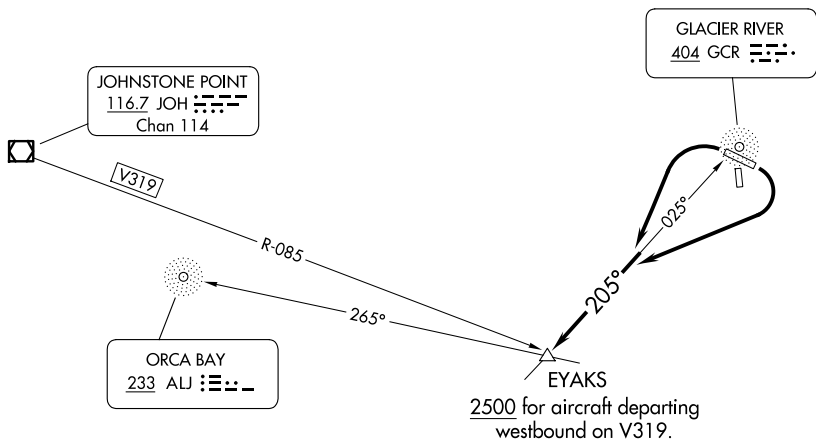
EYAKS SIX DEPARTURE

MERLE K (MUDHOLE) SMITH (CDV)(PACV)
CORDOVA, ALASKA

AL-1195 (FAA)

ANCHORAGE CENTER
119.3 133.6 269.4
JUNEAU RADIO
122.2 123.6 (CTAF)
ASOS
134.8

**TOP ALTITUDE:
ASSIGNED BY ATC**



2500 for aircraft departing westbound on V319.

TAKEOFF MINIMUMS
Rwys 16, 34: NA-ATC.
Rwys 9, 27: Standard.

NOTE: Do not exceed 210K until established on 205° bearing from GCR NDB.
NOTE: ADF required.

NOTE: Chart not to scale.



DEPARTURE ROUTE DESCRIPTION

TAKEOFF RUNWAY 9: Climbing right turn to intercept bearing 205° from GCR NDB to EYAKS INT, thence. . . .

TAKEOFF RUNWAY 27: Climbing left turn to intercept bearing 205° from GCR NDB to EYAKS INT, thence. . . .

. . . .on assigned route, maintain ATC assigned altitude.

EYAKS SIX DEPARTURE
(EYAKS6.EYAKS) 29MAR18

CORDOVA, ALASKA
MERLE K (MUDHOLE) SMITH (CDV)(PACV)

AK, 20 FEB 2025 to 17 APR 2025

AK, 20 FEB 2025 to 17 APR 2025