

LOC/DME I-CDV <b>110.7</b> Chan 44	APP CRS <b>275°</b>	Rwy Idg TDZE Apt Elev <b>7500</b> <b>53</b> <b>53</b>
--	------------------------	--

# ILS or LOC RWY 27

MERLE K (MUDHOLE) SMITH (CDV) (PACV)

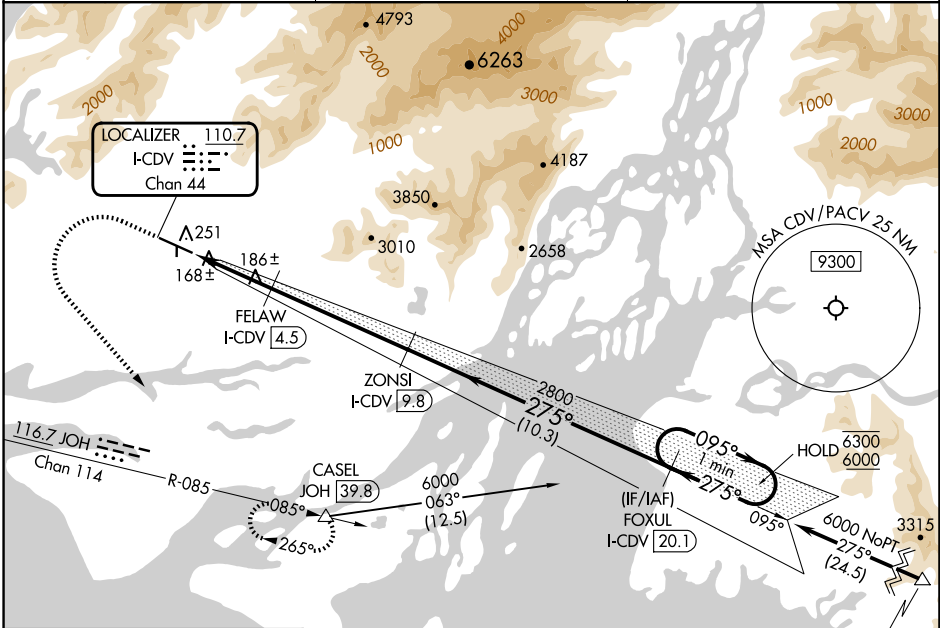
DME required. From CASEL: RNAV 1-GPS required.

**⚠** Circling NA north of Rwy 9-27.  
**⚠** Circling Rwy 16, 34 NA at night.

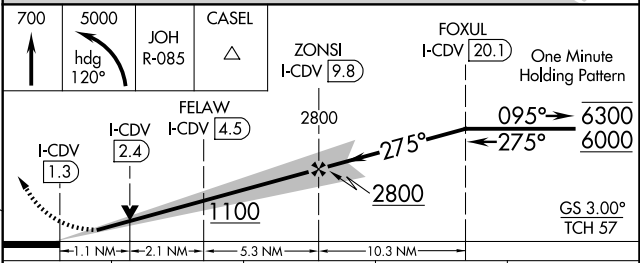
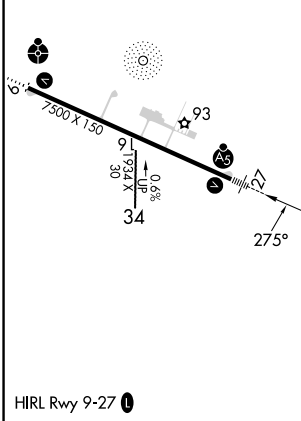


**MISSED APPROACH:** Climb to 700 then climbing left turn to 5000 on heading 120° and on JOH VOR/DME R-085 to CASEL/JOH 39.8 DME and hold, continue climb-in-hold to 5000.

ASOS <b>134.8</b>	ANCHORAGE CENTER <b>119.3 133.6 269.4</b>	JUNEAU RADIO <b>122.2 123.6 (CTAF) 1</b>
----------------------	--	---



ELEV 53	<b>D</b>	TDZE 53
---------	----------	---------



CATEGORY	A	B	C	D
S-ILS 27	328/24 275 (300-1/2)			
S-LOC 27	440/24	387 (400-1/2)	440/40	387 (400-3/4)
CIRCLING	480-1 427 (500-1)	520-1 467 (500-1)	520-1 1/2 467 (500-1 1/2)	1540-3 1487 (1500-3)

AK, 20 FEB 2025 to 17 APR 2025

AK, 20 FEB 2025 to 17 APR 2025