

WAAS CH 82031 W27A	APP CRS 275°	Rwy Idg TDZE Apt Elev	7500 53 53
--	------------------------	-----------------------------	---------------------------------------

RNAV (GPS) RWY 27

MERLE K (MUDHOLE) SMITH (CDV)(PACV)

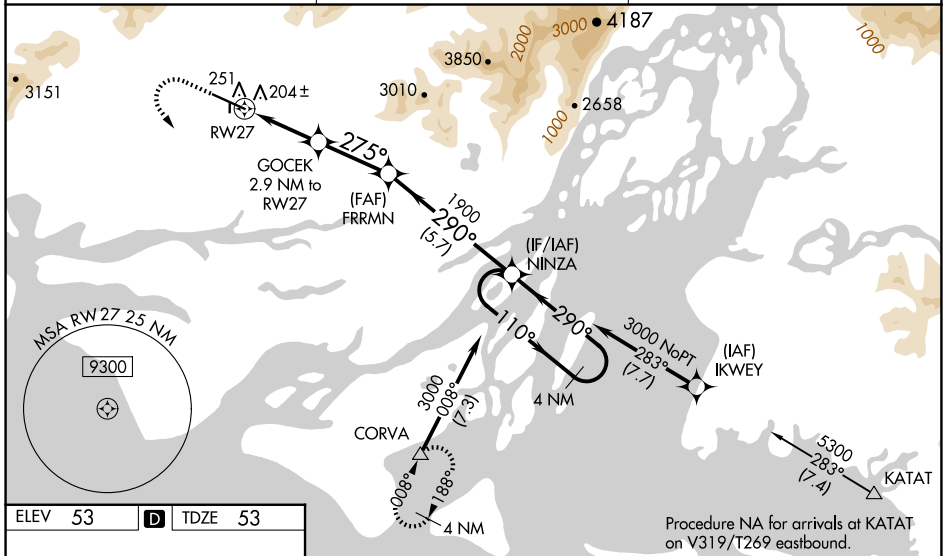
RNP APCH-GPS.

⚠ Baro-VNAV NA. VDP NA with Valdez altimeter setting. For inoperative MALSR, increase LPV all Cats visibility to RVR 4500, LNAV/VNAV all Cats visibility to 1½, LNAV Cats A/B visibility to RVR 5500, Cats C/D visibility to RVR 6000. When local altimeter setting not received use Valdez altimeter setting and increase all DA 113 feet and all MDA 120 feet, and increase LPV all Cats visibility to RVR 4000, increase LNAV/VNAV all Cats visibility to 1½, increase LNAV Cats C/D visibility to RVR 5500. For inoperative MALSR when using Valdez altimeter setting, increase LPV all Cats visibility to RVR 6000, LNAV Cats A/B visibility to RVR 5500, and LNAV Cats C/D visibility to 1½. Circling to Rwy 16/34 NA at night. Circling NA north of Rwy 9/27.

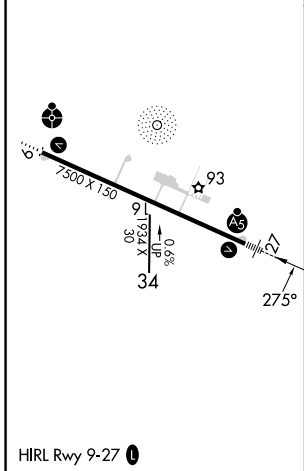
⚠ MALSR

⚠ MISSED APPROACH: Climb to 600 then climbing left turn to 3000 direct CORVA and hold.

ASOS 134.8	ANCHORAGE CENTER 119.3 133.6 269.4	JUNEAU RADIO 122.2 123.6 (CTAF) Ⓛ
----------------------	--	---



ELEV 53	D	TDZE 53
---------	----------	---------



	600	3000	CORVA		NINZA	4 NM Holding Pattern
	↑	↻	△			
*LNAV only.	GOCEK 2.9 NM to RW27	FRRMNM 1900	NINZA	4 NM	110° →	3000
	1.1 NM to RW27	1020	1900	290°	← 290°	GP 3.00° TCH 57
	1.1 NM	1.8 NM	2.8 NM	5.7 NM		
CATEGORY	A	B	C	D		
LPV DA		328/24	275 (300-½)			
LNAV/VNAV DA		523/56	470 (500-1¼)			
LNAV MDA	460/24	407 (500-½)	460/40	407 (500-¾)		
CIRCLING	480-1 427 (500-1)	520-1 467 (500-1)	520-1½ 467 (500-1½)	1540-3 1487 (1500-3)		

AK, 20 FEB 2025 to 17 APR 2025

AK, 20 FEB 2025 to 17 APR 2025