

ILS Y or LOC/DME Y RWY 6

LOC I-EDF 110.3	APCH CRS 062°	Rwy Idg TDZE Arpt Elev 10,000 175 213
---------------------------	-------------------------	---------------------------------------------------------------------------

[USAF]

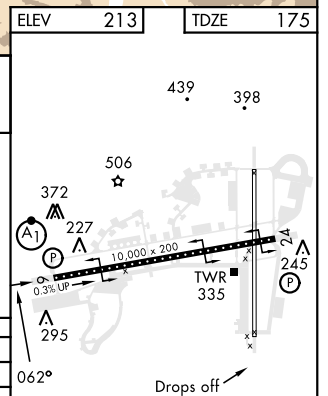
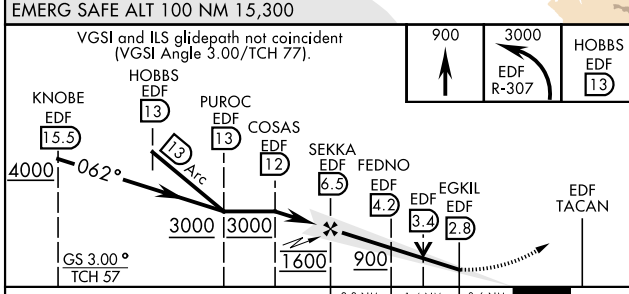
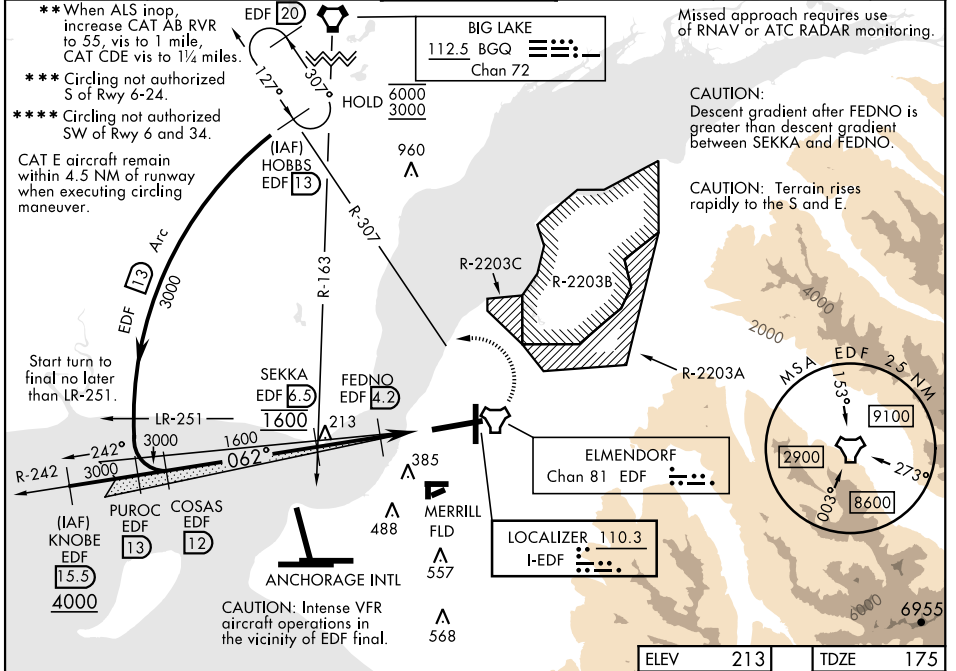
ELMENDORF AFB (PAED)

▼ * When TDZ/CL lights inop increase RVR to 24.
When ALS inop, increase RVR to 40, vis to ¾ mile.



MISSED APPROACH: Climb to 900, then climbing left turn to 3000 via EDF R-307 to HOBBS and hold.

ATIS ★ 124.3 273.5	ANCHORAGE APP CON 118.6 290.5 (N) 123.8 259.3 (S)	TOWER 127.2 352.05	GND CON 121.8 275.8	CLNC DEL 128.8 306.925	PAR
------------------------------	-----------------------------------------------------------------------	------------------------------	-------------------------------	----------------------------------	-----



	A	B	C	D	E
S-ILS 6*	375/18		200	[200-1/2]	
S-LOC 6**	600/24	425 (400-1/2)	600/40	425 (400-3/4)	
*** CIRCLING	840-1	627 (700-1)	840-1 3/4 627 (700-1 3/4)	840-2 627 (700-2)	940-2 1/2 727 (800-2 1/2)
RWY 34 CIRCLING MINIMUMS					
**** CIRCLING	840-1	627 (700-1)	920-2 707 (800-2)	1020-2 1/2 807 (900-2 1/2)	1480-3 1267 (1300-3)

HIRL Rwy 6-24
TDZL/CL Rwy 6

ILS Y or LOC/DME Y RWY 6

AK, 20 FEB 2025 to 17 APR 2025

AK, 20 FEB 2025 to 17 APR 2025