

TACAN Y RWY 16

TACAN EDF Chan 81	APCH CRS 133°	Rwy ldg TDZE Arprt Elev 7493 213 213
-----------------------------	-------------------------	--

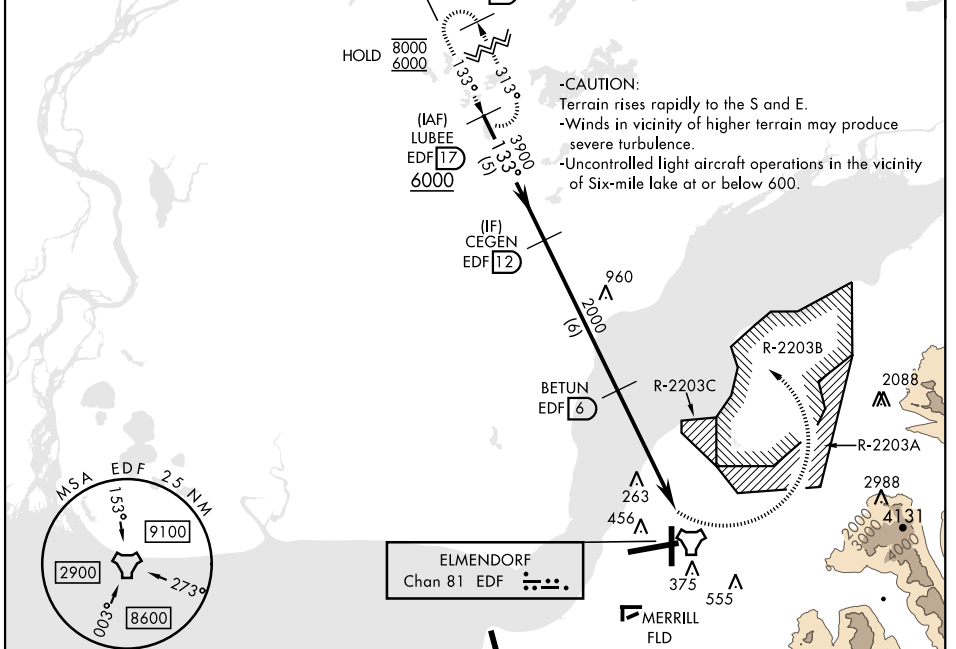
[USAF]

ELMENDORF AFB (PAED)

▼ * Circling not authorized SW of Rwy 6 and 34. MISSED APPROACH: Climbing left turn to 6000 via EDF
CAT E aircraft remain within 4.5 NM of runway when R-313 to LUBEE and hold. Continue climb-in-hold to 6000. executing circling maneuver.

ATIS ★ 124.3 273.5	ANCHORAGE APP CON 118.6 290.5 (N) 123.8 259.3 (S)	TOWER 127.2 352.05	GND CON 121.8 275.8	CLNC DEL 128.8 306.925	PAR
------------------------------	---	------------------------------	-------------------------------	----------------------------------	-----

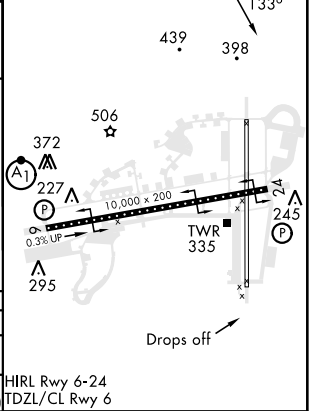
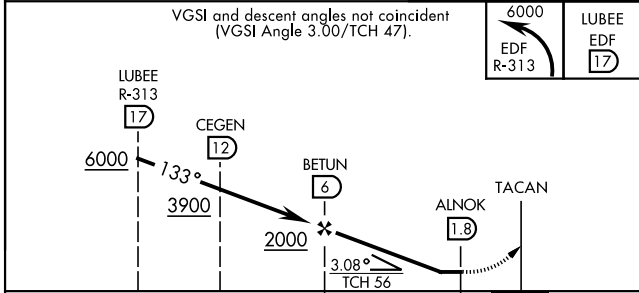
MISSED APPROACH NOT FOR CIVIL USE	Knots	60	120	180	240	300	360
	V/V(fpm)	477	954	1431	1908	2385	2862
	Min climb of 477 ft/NM to 3900 - Controlling Obstacle 2088						



AK, 20 FEB 2025 to 17 APR 2025

AK, 20 FEB 2025 to 17 APR 2025

EMERG SAFE ALT 100 NM 15,300	ANCHORAGE INTL	ELEV 213	TDZE 213
------------------------------	----------------	----------	----------



CATEGORY	A	B	C	D	E
S-16	NOT AUTHORIZED				680-1 3/8 467 (500-1 3/8)
CIRCLING*	NOT AUTHORIZED				1480-3 1267 (1300-3)

HIRL Rwy 6-24
TDZL/CL Rwy 6

TACAN Y RWY 16