

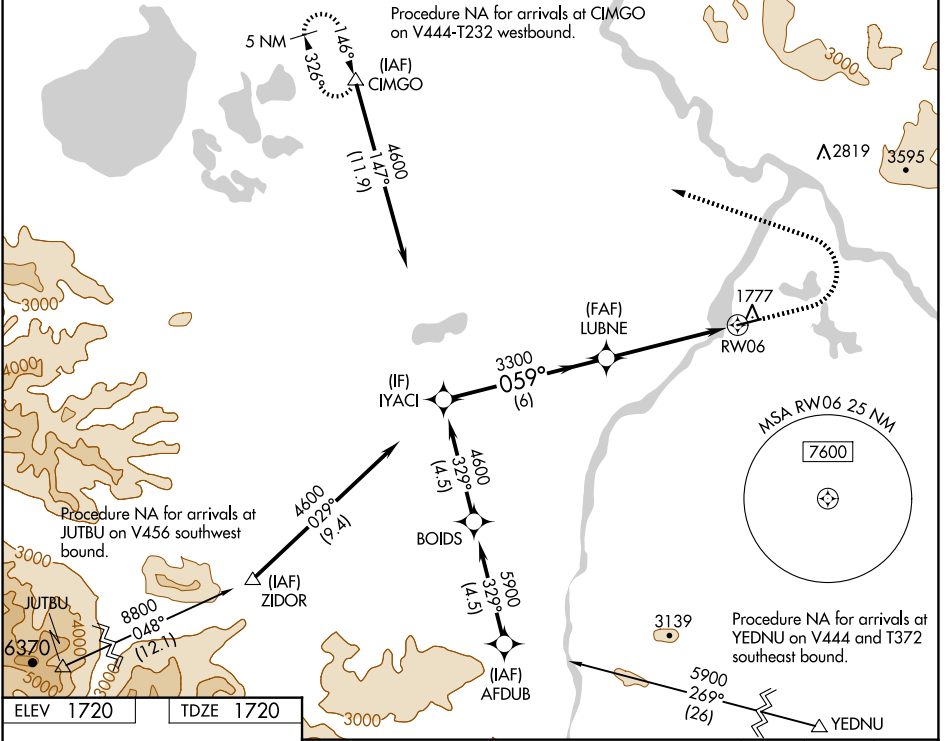
WAAS CH 65646 W06A	APP CRS 059°	Rwy Idg TDZE Apt Elev	5100 1720 1720
--	------------------------	-----------------------------	---

RNAV (GPS) RWY 6

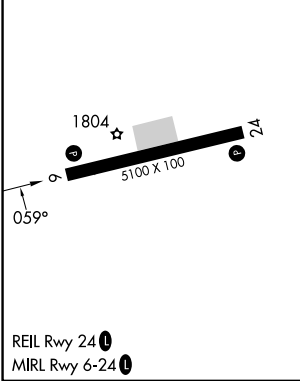
NORTHWAY (ORT)(PAOR)

RNP APCH - GPS.	MISSED APPROACH: Climb to 2200 then climbing left turn to 4800 direct CIMGO and hold.
Rwy 6 helicopter visibility reduction below 3/4 SM NA. -37°C For uncompensated Baro-VNAV systems, LNAV/VNAV NA below -23°C or above 54°C.	

ASOS 135.4	ANCHORAGE CENTER 126.55 323.0	NORTHWAY RADIO 123.6 (CTAF) 0
----------------------	---	---



ELEV 1720	TDZE 1720
-----------	-----------



IYACI 4600 LUBNE 3300 GP 3.00° TCH 39 6 NM 3.5 NM 1.3 NM CATEGORY A B C D LPV DA 1974-3/4 254 (300-3/4) LNAV/VNAV DA 2030-7/8 310 (400-7/8) LNAV MDA 2180-1 460 (500-1) 2180-1 3/8 460 (500-1 3/8) CIRCLING 2180-1 460 (500-1) 2240-1 1/2 520 (600-1 1/2) 2340-2 620 (700-2)	2200 4800 CIMGO 1.3 NM to RWY 6 RWY 6 2200 4800 CIMGO
---	--

AK, 20 FEB 2025 to 17 APR 2025

AK, 20 FEB 2025 to 17 APR 2025