

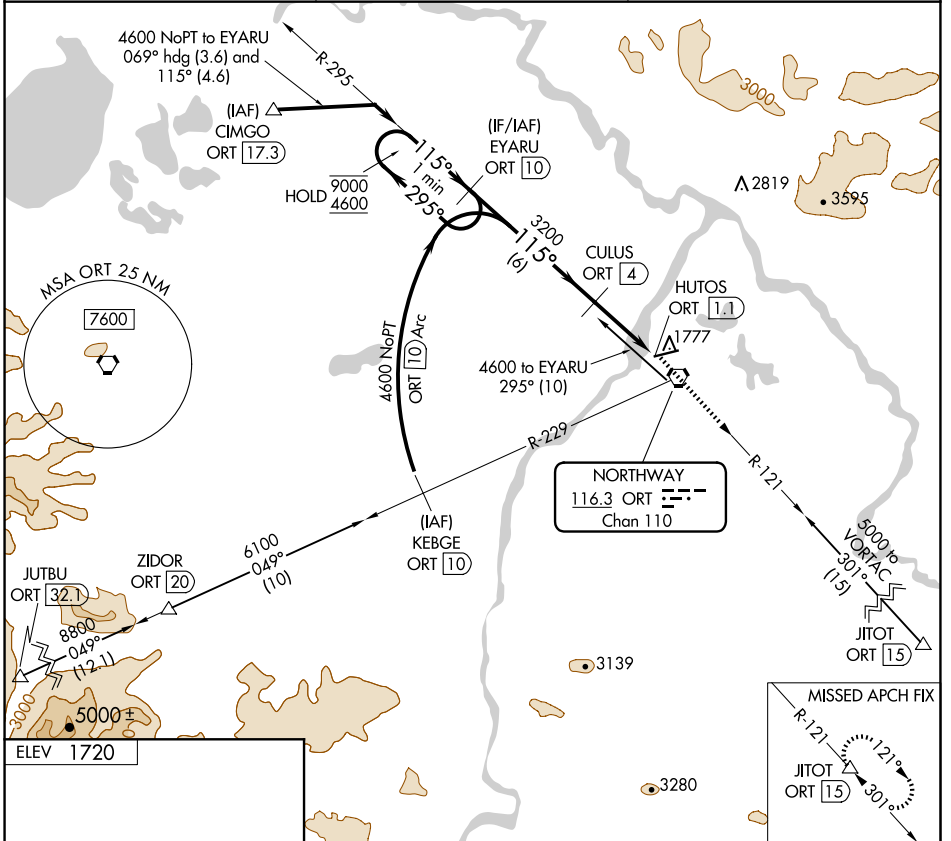
VORTAC ORT <b>116.3</b> Chan <b>110</b>	APP CRS <b>115°</b>	Rwy Idg TDZE Apt Elev <b>1720</b>	<b>N/A</b> <b>N/A</b>
---	------------------------	--	--------------------------

# VOR-A

## NORTHWAY (ORT)(PAOR)

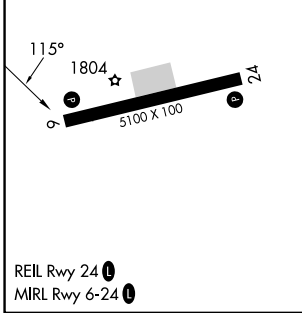
DME required. ▽ ❄️ -37°C	MISSED APPROACH: Climb to 8400 on ORT R-121 to JIOT/ORT 15 DME and hold, continue climb-in-hold to 8400.
--------------------------------	--

ASOS <b>135.4</b>	ANCHORAGE CENTER <b>126.55 323.0</b>	NORTHWAY RADIO <b>123.6 (CTAF) 0</b>
----------------------	---	---



AK, 20 FEB 2025 to 17 APR 2025

AK, 20 FEB 2025 to 17 APR 2025



CATEGORY	A	B	C	D
CIRCLING	2160-1 440 (500-1)	2180-1 460 (500-1)	2240-1½ 520 (600-1½)	2340-2 620 (700-2)