

# ILS or LOC/DME RWY 10

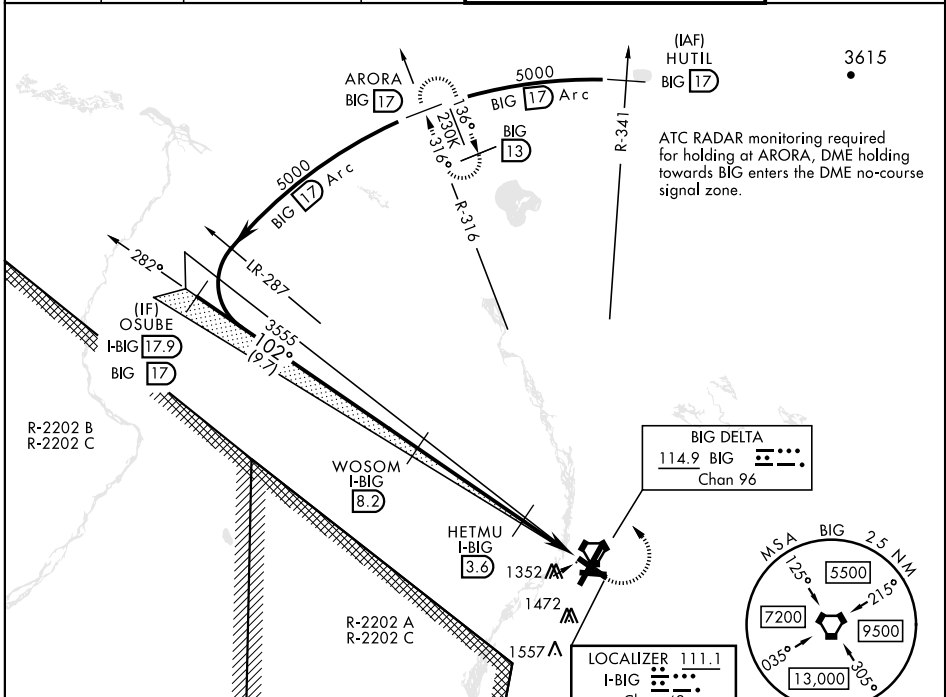
LOC/DME I-BIG <b>111.1</b> Chan <b>48</b>	APCH CRS <b>102°</b>	Rwy ldg TDZE Arpt Elev <b>6115</b> <b>1253</b> <b>1285</b>	[USA]	ALLEN AAF (PABI)
---	-------------------------	---	-------	------------------

DME required

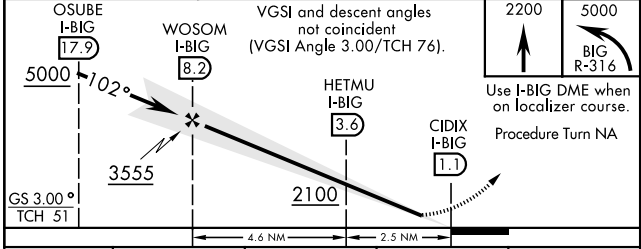
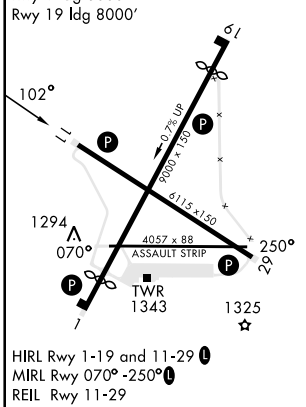
▼ \* Circling not authorized East of Rwy 1-19.

MISSED APPROACH: Climb to 2200 then climbing left turn to 5000 via BIG R-316 to ARORA/BIG 17 DME and hold.

ATIS <b>132.075</b>	ASOS <b>135.65</b>	ANCHORAGE CENTER <b>135.3 322.5</b>	CTAF <b>122.90</b>	TOWER ★ <b>119.8 235.775 40.8 (E) FM</b>	GND CON <b>118.225 251.05</b>
------------------------	-----------------------	--	-----------------------	---	----------------------------------



ELEV 1285	TDZE 1253
-----------	-----------



CATEGORY	A	B	C	D
S-ILS 11		1453-¾	200 (200-¾)	
S-LOC 11		1620-1	367 (400-1)	
CIRCLING*	1740-1 455 (500-1)	1780-1 495 (500-1)	1860-1½ 575 (600-1½)	2040-2½ 755 (800-2½)

# ILS or LOC/DME RWY 10

AK, 20 FEB 2025 to 17 APR 2025

AK, 20 FEB 2025 to 17 APR 2025