

NDB DJN 347	APCH CRS 186°	Rwy ldg TDZE 347	Arprt Elev 1285
-----------------------	-------------------------	---------------------	---------------------------

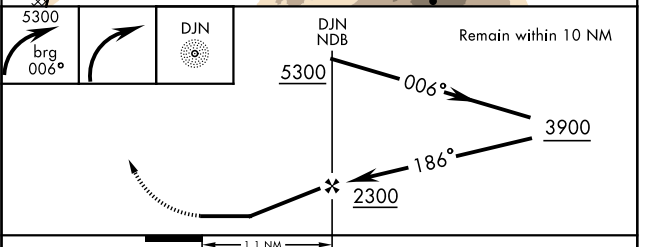
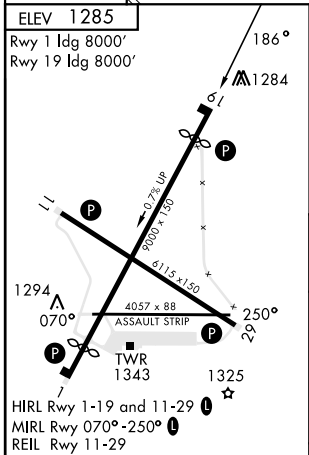
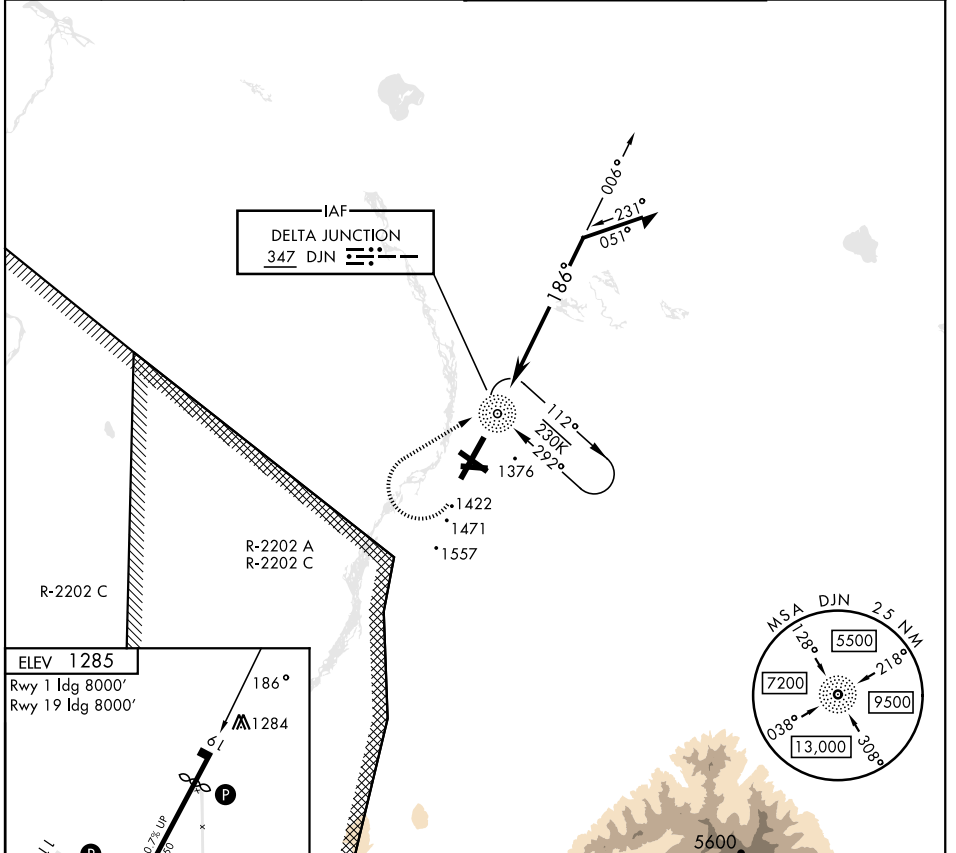
[USA]

ALLEN AAF (PABI)

RNAV or RADAR required.
 * Circling not authorized East of Rwy 1-19.

MISSED APPROACH: Climbing right turn to 5300 via 006° bearing from DJN NDB, then right turn direct DJN NDB and hold.

ATIS 132.075	ASOS 135.65	ANCHORAGE CENTER 135.3 322.5	CTAF 122.9	TOWER ★ 119.8 235.775 40.8 (E) FM	GND CON 118.225 251.05
------------------------	-----------------------	--	----------------------	---	----------------------------------



FAF to MAP 1.1 NM					CATEGORY	A	B	C	D
Knots	60	90	120	150	180	1880-1	595 (600-1)	1880-1½ 595 (600-1½)	2040-2½ 755 (800-2½)
Min:Sec	1:06	0:44	0:33	0:26	0:22	<input checked="" type="checkbox"/> CIRCLING*			

AK, 20 FEB 2025 to 17 APR 2025

AK, 20 FEB 2025 to 17 APR 2025