

DELTA JUNCTION/FORT GREELY, ALASKA

VOR/DME or TACAN RWY 19

VORTAC BIG <b>114.9</b> Chan <b>96</b>	APCH CRS <b>197°</b>	Rwy Idg <b>8000</b> TDZE <b>1239</b> Arprt Elev <b>1285</b>
--	-------------------------	---

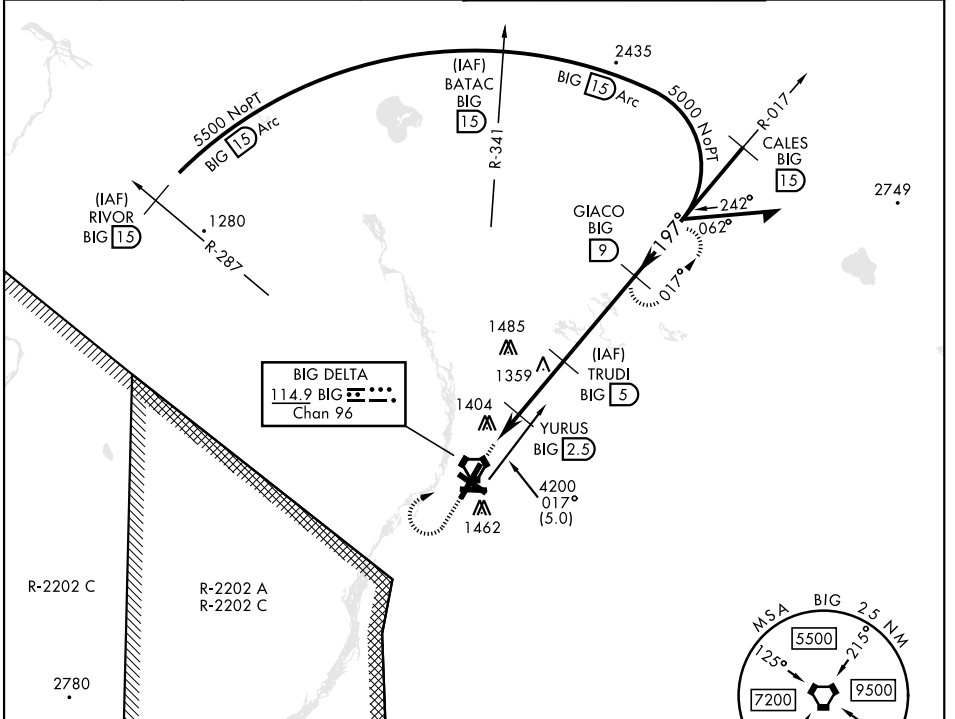
[USA]

ALLEN AAF (PABI)

▼ \*Circling not authorized East of Rwy 1-19.

MISSED APPROACH: Climb to 2100, then climbing right turn to 4000 via BIG R-017 to GIACO/9 DME and hold.

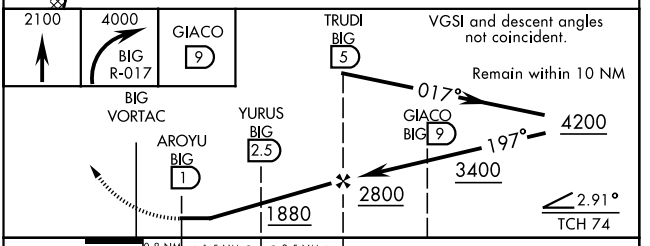
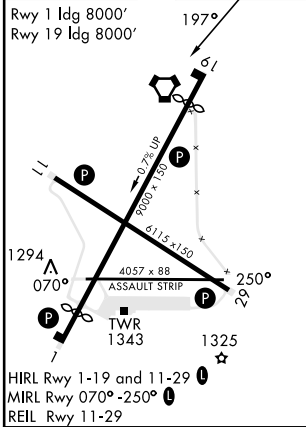
ATIS <b>132.075</b>	ASOS <b>135.65</b>	ANCHORAGE CENTER <b>135.3 322.5</b>	CTAF <b>122.9</b>	TOWER ★ <b>119.8 235.775 40.8 (E) FM</b>	GND CON <b>118.225 251.05</b>
------------------------	-----------------------	--	----------------------	---	----------------------------------



AK, 20 FEB 2025 to 17 APR 2025

AK, 20 FEB 2025 to 17 APR 2025

ELEV <b>1285</b>	TDZE <b>1239</b>
------------------	------------------



CATEGORY	A	B	C	D
S-19	1660-1 421 (400-1)		1660-1¼ 421 (400-1¼)	
CIRCLING *	1720-1 435 (500-1)	1760-1 475 (500-1)	1760-1½ 475 (500-½)	1860-2 575 (600-2)

DELTA JUNCTION/FORT GREELY, ALASKA

64°00'N-145°43'W

ALLEN AAF (PABI)

Amtd 2B 05DEC19

VOR/DME or TACAN RWY 19