

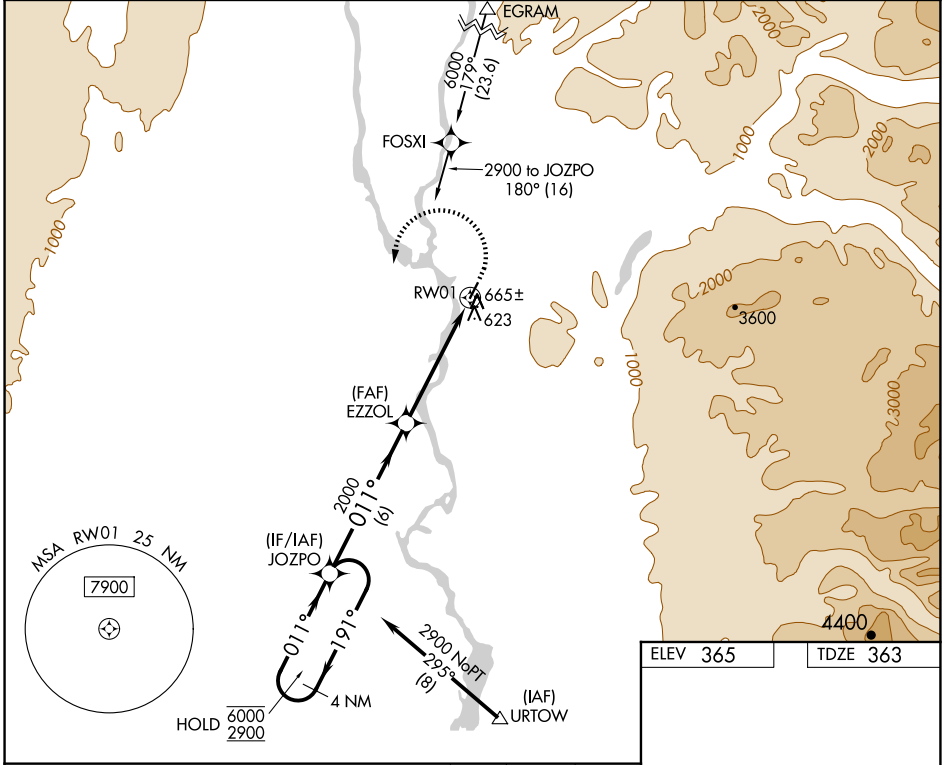
APP CRS	Rwy Idg	3500
011°	TDZE	363
	Apt Elev	365

RNAV (GPS) RWY 1

TALKEETNA (TKA)(PATK)

RNP APCH.	<p>⚠ Circling NA east of Rwy 1-19. Rwy 1 helicopter visibility reduction below $\frac{3}{4}$ SM NA. For uncompensated Baro-VNAV systems, LNAV/VNAV NA below -20°C or above 54°C.</p> <p>❄ -29°C</p>	<p>MISSED APPROACH: Climb to 800 then climbing left turn to 2900 direct JOZPO and hold.</p>
-----------	--	---

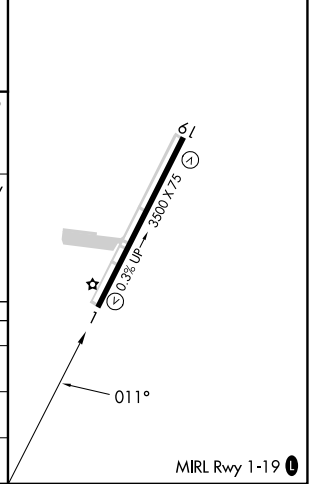
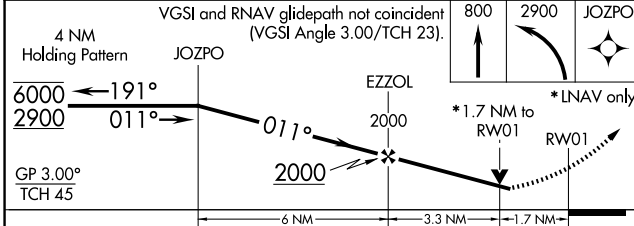
AFIS 135.2	ANCHORAGE CENTER 125.55 254.3	TALKEETNA RADIO 123.6 (CTAF) 0	UNICOM 123.0
----------------------	---	--	------------------------



AK, 20 FEB 2025 to 17 APR 2025

AK, 20 FEB 2025 to 17 APR 2025

ELEV 365	TDZE 363
----------	----------



CATEGORY	A	B	C	D
LNAV/VNAV DA	922-2 559 (600-2)			
LNAV MDA	920-1 557 (600-1)	920-1 $\frac{5}{8}$ 557 (600-1 $\frac{5}{8}$)		
CIRCLING	960-1 595 (600-1)	1040-2 675 (700-2)	1200-2 $\frac{3}{4}$ 835 (900-2 $\frac{3}{4}$)	