

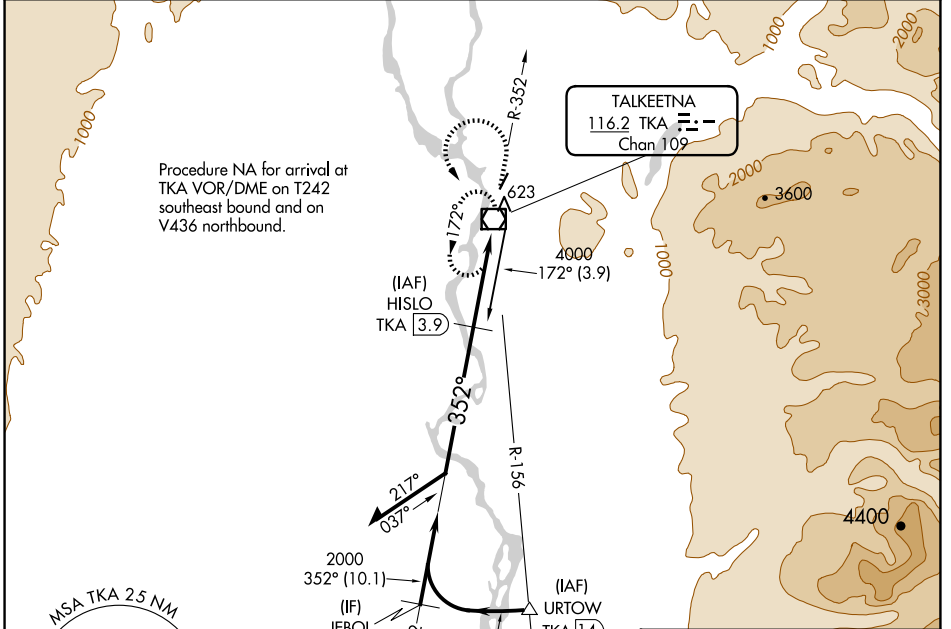
VOR/DME TKA <b>116.2</b> Chan <b>109</b>	APP CRS <b>352°</b>	Rwy ldg TDZE Apt Elev	<b>3500</b> <b>363</b> <b>365</b>
--	------------------------	-----------------------------	---

# VOR RWY 1

TALKEETNA (TKA)(PATK)

DME required.		MISSED APPROACH: Climb to 2100 on TKA VOR/DME R-352 then climbing left turn to 3200 direct TKA VOR/DME and hold.	
<p>▼ Circling NA east of Rwy 1-19.</p> <p>⚠ Rwy 1 helicopter visibility reduction below 1 SM NA.</p> <p>☞ -29°C Straight-in Rwy 1 NA at night, Circling Rwy 1 NA at night.</p>			

AFIS <b>135.2</b>	ANCHORAGE CENTER <b>125.55 254.3</b>	TALKEETNA RADIO <b>123.6 (CTAF) 0</b>	UNICOM <b>123.0</b>
----------------------	---	--	------------------------



AK, 20 FEB 2025 to 17 APR 2025

AK, 20 FEB 2025 to 17 APR 2025

ELEV 365	TDZE 363
----------	----------

