

APP CRS <b>038°</b>	Rwy Idg <b>4600</b>
	TDZE <b>368</b>
	Apt Elev <b>368</b>

# RNAV (GPS) RWY 4L

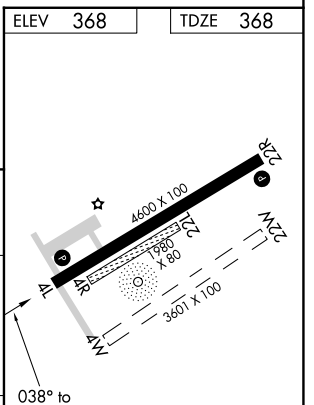
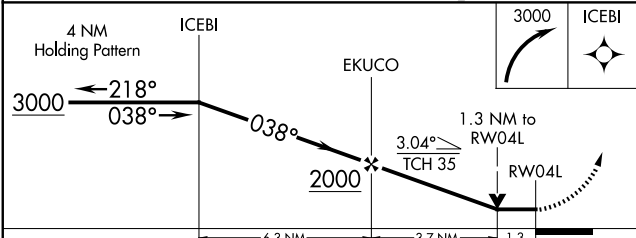
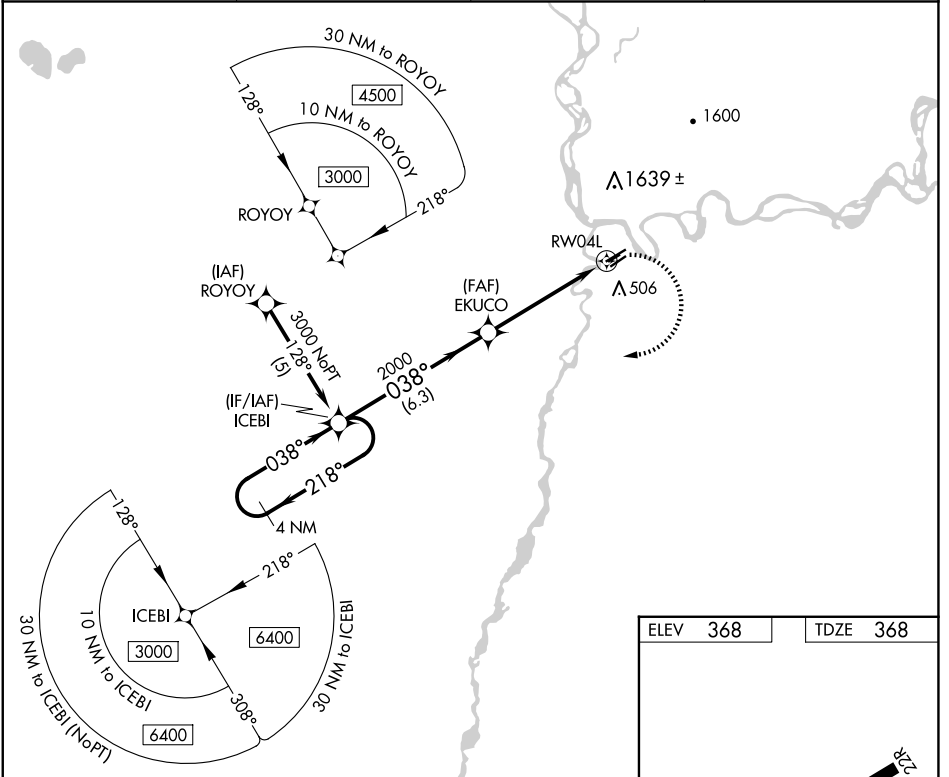
NENANA MUNI (ENN)(PANN)

RNP APCH.

**⚠** When local altimeter setting not received, use Fairbanks Intl altimeter setting and increase all MDAs 100 feet and LNAV Cat C and Circling Cts C/D visibility ¼ SM. Circling NA west of Rwy 4L-22R. Procedure NA at night. Circling NA to Rws 4R, 22L, 4W and 22W. Rwy 4L helicopter visibility reduction below 1 SM NA.

MISSED APPROACH: Climbing right turn to 3000 direct ICEBI and hold.

ASOS <b>125.2</b>	FAIRBANKS APP CON <b>125.35 363.2</b>	FAIRBANKS RADIO <b>122.5</b>	CTAF <b>122.1</b>
----------------------	--	---------------------------------	----------------------



CATEGORY	A	B	C	D
LNAV MDA	800-1	432 (500-1)	800-1¼ 432 (500-1¼)	800-1½ 432 (500-1½)
CIRCLING	860-1	492 (500-1)	1180-2½ 812 (900-2½)	1180-2¾ 812 (900-2¾)

MIRL Rws 4L-22R and 4R-22L  
REIL Rws 4L and 22R

AK, 20 FEB 2025 to 17 APR 2025

AK, 20 FEB 2025 to 17 APR 2025