

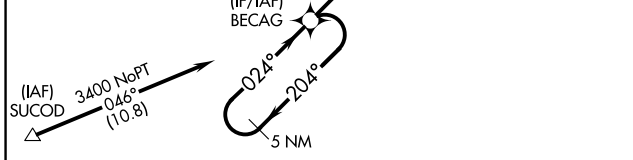
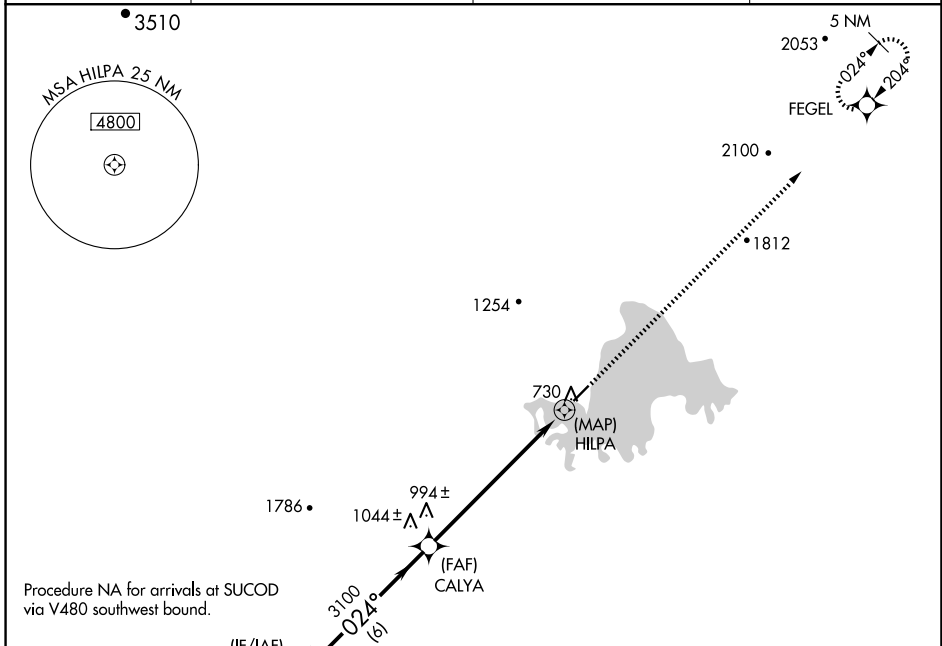
APP CRS <b>024°</b>	Rwy Idg <b>4184</b> TDZE <b>682</b> Apt Elev <b>682</b>
------------------------	---

# RNAV (GPS) RWY 3

MINCHUMINA (MHM) (PAMH)

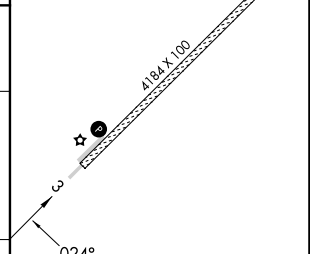
<p>-36°C</p>	<p>DME/DME RNP-0.3 NA. Circling NA west of Rwy 3-21.</p>	<p>MISSED APPROACH: Climb to 4200 direct FEGEL and hold.</p>
--------------	--	--

AWOS-3P <b>135.55</b>	ANCHORAGE CENTER <b>120.9 319.2</b>	FAIRBANKS RADIO <b>122.2</b>	CTAF <b>122.9</b>
--------------------------	--	---------------------------------	----------------------



ELEV 682	TDZE 682
----------	----------

5 NM Holding Pattern	BECAG	CALYA	HILPA
3400	3100	3100	3100
← 204°	→ 024°	→ 024°	→ 024°
6 NM	5.3 NM	1.6	0.5
		3.06°	TCH 35
		1.6 NM to HILPA	



CATEGORY	A	B	C	D
LNVA MDA	1360-1	678 (700-1)	1360-2	678 (700-2)
CIRCLING	1360-1	678 (700-1)	1460-2¼ 778 (800-2¼)	1460-2½ 778 (800-2½)

MIRL Rwy 3-21

AK, 20 FEB 2025 to 17 APR 2025

AK, 20 FEB 2025 to 17 APR 2025