

WAAS CH 90226 W16A	APP CRS 160°	Rwy Idg 4843 TDZE 341 Apt Elev 343
--	------------------------	---

RNAV (GPS) RWY 16

MC GRATH (MCG) (PAMC)

RNP APCH-GPS.

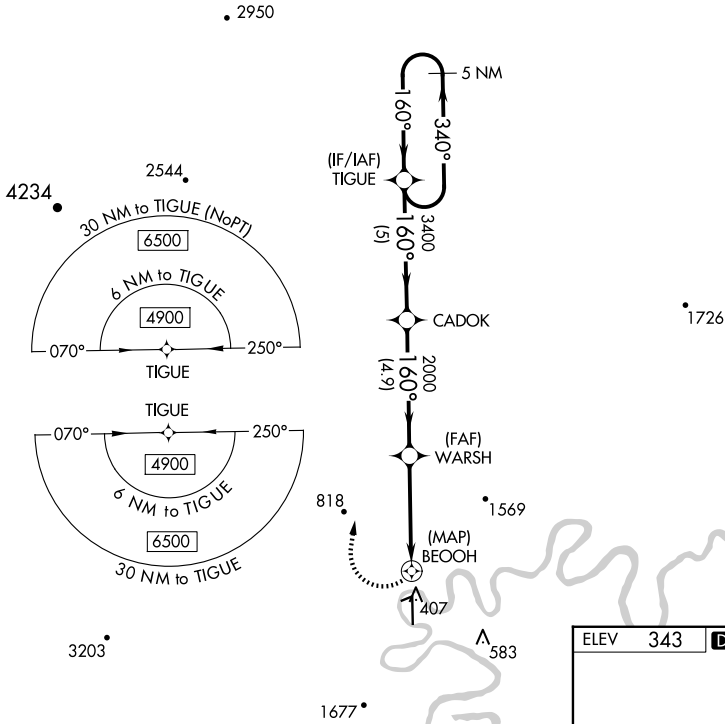
MISSED APPROACH: Climbing right turn to 4900 direct TIGUE and hold, continue climb-in-hold to 4900.

⚠ Circling NA for Cat D west of Rwy 16-34.
⚠ -45°C

ASOS
135.65

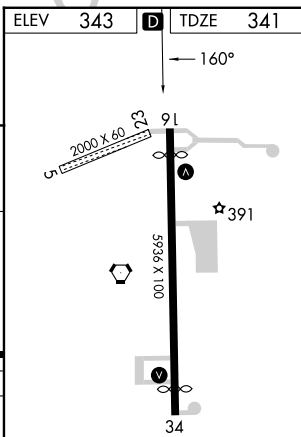
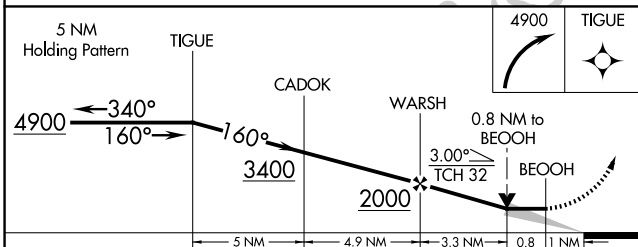
ANCHORAGE CENTER
128.1 353.8

MCGRATH RADIO
123.6 (CTAF) **0**



AK, 20 FEB 2025 to 17 APR 2025

AK, 20 FEB 2025 to 17 APR 2025



CATEGORY	A	B	C	D
LP MDA	960-1¼	619 (700-1¼)	960-1¾	619 (700-1¾)
LNAV MDA	960-1¼	619 (700-1¼)	960-1¾	619 (700-1¾)
CIRCLING	960-1¼	617 (700-1¼)	1460-3 1117 (1200-3)	1620-3 1277 (1300-3)

MIRL Rwy 5-23 and 16-34 **0**
REIL Rwy 16 and 34 **0**