

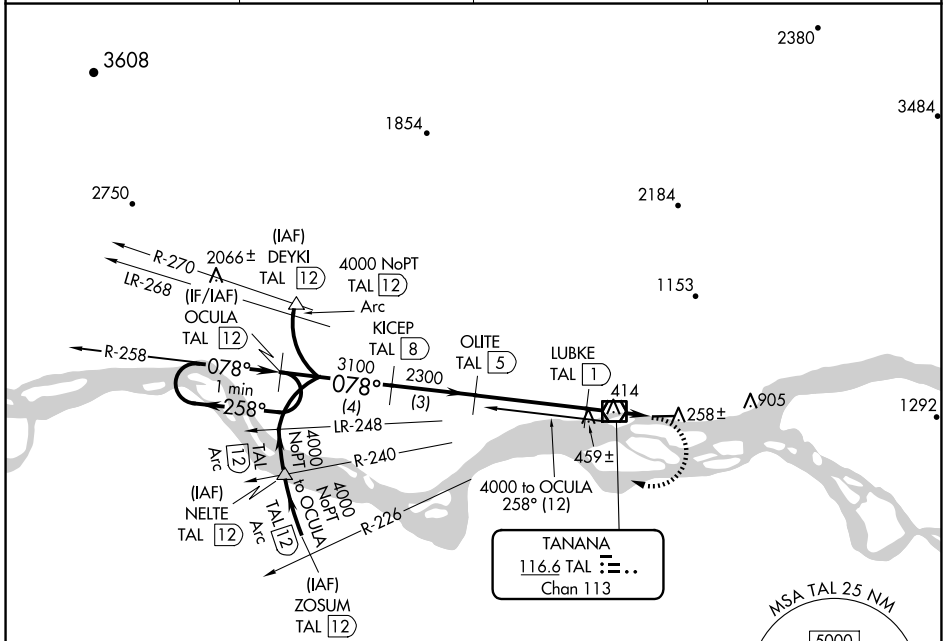
VOR/DME TAL 116.6 Chan 113	APP CRS 078°	Rwy Idg TDZE Apt Elev	4400 235 242
--	------------------------	-----------------------------	---

VOR/DME RWY 7
RALPH M CALHOUN MEML (TAL) (PATA)

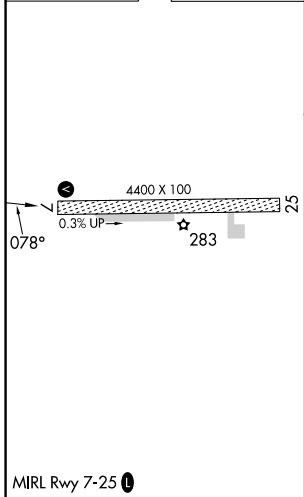
⚠ Circling NA north of Rwy 7-25.
Rwy 7 helicopter visibility reduction below 3/4 SM NA.

MISSED APPROACH: Climbing right turn to 4000 via heading 275° and TAL VOR/DME R-258 to OCULA 12 DME and hold, continue climb-in-hold to 4000.

ASOS 135.1	ANCHORAGE CENTER 120.9 285.4	FAIRBANKS RADIO 122.65	CTAF 122.9
----------------------	--	----------------------------------	----------------------



ELEV 242	TDZE 235
----------	----------



VGSI and descent angles not coincident (VGSI Angle 3.00/TCH 24).

4000	TAL R-258	OCULA TAL 12
------	-----------	--------------

One Minute Holding Pattern

CATEGORY	A	B	C	D
S-7	720-1	485 (500-1)	720-1 3/8	485 (500-1 3/8)
CIRCLING	740-1 498 (500-1)	760-1 518 (600-1)	1260-3	1018 (1100-3)

AK, 20 FEB 2025 to 17 APR 2025

AK, 20 FEB 2025 to 17 APR 2025