

(DRRLL4.DRRLL) 21336

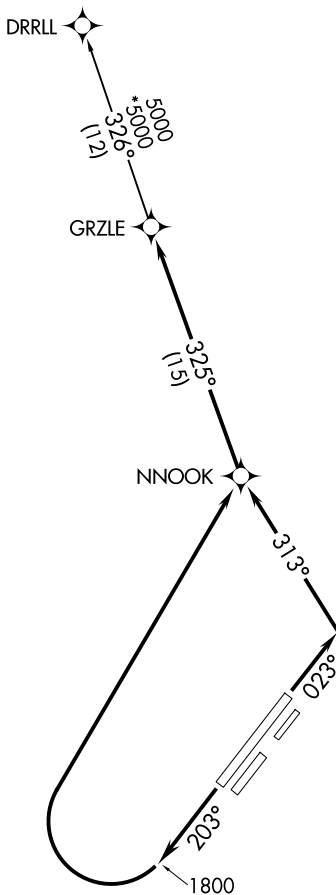
# DRRLL FOUR DEPARTURE (RNAV)

AL-1234 (FAA)

FAIRBANKS INTL (FAI) (PAFA)  
FAIRBANKS, ALASKA

ATIS  
 124.4  
 CLNC DEL  
 127.6  
 GND CON  
 121.9  
 FAIRBANKS TOWER  
 118.3 257.8  
 FAIRBANKS DEP CON  
 125.35 363.2

**TOP ALTITUDE:  
ASSIGNED BY ATC**



NOTE: GPS required.  
 NOTE: RNAV 1.

### TAKEOFF MINIMUMS

Rwys 2, 2R, 2W, 20, 20L, 20W: NA - Air Traffic.

Rwy 2L: Standard with minimum climb of 290' per NM to 3100.

Rwy 20R: Standard with minimum climb of 270' per NM to 3200.

NOTE: Chart not to scale.



### DEPARTURE ROUTE DESCRIPTION

TAKEOFF RUNWAY 2L: Climb heading 023° to intercept course 313° to NNOOK, then on track 325° to GRZLE, thence. . . .

TAKEOFF RUNWAY 20R: Climb heading 203° to 1800, then climbing right turn direct NNOOK, then on track 325° to GRZLE, thence. . . .

. . . .on DRRLL transition, maintain ATC assigned altitude, expect filed altitude ten minutes after departure.

DRRLL TRANSITION (DRRLL4.DRRLL)

# DRRLL FOUR DEPARTURE (RNAV)

(DRRLL4.DRRLL) 02DEC21

FAIRBANKS, ALASKA  
FAIRBANKS INTL (FAI) (PAFA)

AK, 20 FEB 2025 to 17 APR 2025

AK, 20 FEB 2025 to 17 APR 2025