

GALENA EIGHT DEPARTURE

AL-1234 (FAA)

FAIRBANKS INTL (FAI) (PAFA)

FAIRBANKS, ALASKA

AK, 20 FEB 2025 to 17 APR 2025

DEPARTURE ROUTE DESCRIPTION

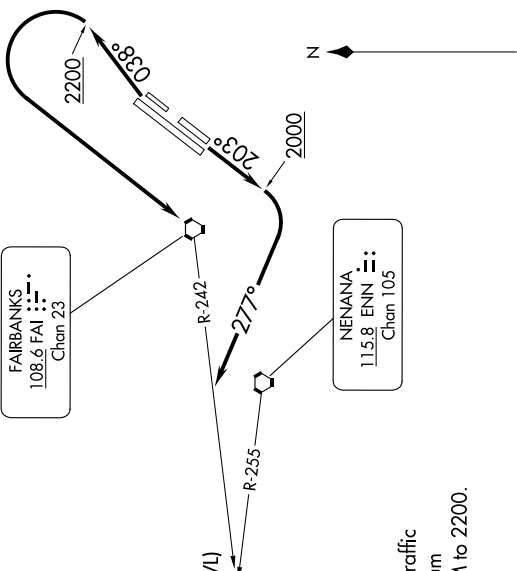
TAKEOFF RUNWAYS 2L/R: Climb on heading 038° to 2200, then left turn direct FAI VORTAC, thence
 TAKEOFF RUNWAYS 20L/R: Climb on heading 203° to 2000, then right turn heading 277°, thence

. . . intercept FAI R-242 to ENN R-255, then on ENN R-255 and GAL R-077 to GAL VOR/DME, then continue climb on assigned route and altitude.

TOP ALTITUDE: ASSIGNED BY ATC

DME required.

FAIRBANKS DEP CON
125.35/363.2



TAKEOFF MINIMUMS
 Rwy 2, 2W, 20, 20W: NA - Air Traffic
 Rwy 2L/R: Standard with minimum
 climb of 230' per NM to 2200.
 Rwy 20L/R: Standard.

NOTE: Chart not to scale.

GALENA EIGHT DEPARTURE

AK, 20 FEB 2025 to 17 APR 2025