

HI-ILS Y or LOC Y RWY 20R

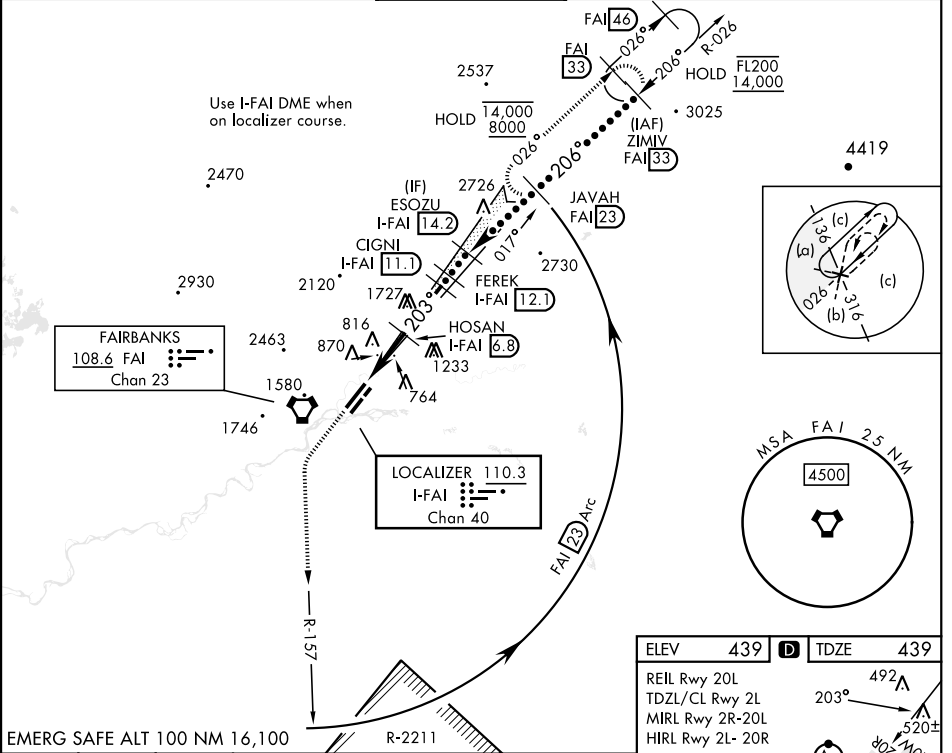
LOC/DME I-FAI 110.3 Chan 40	APCH CRS 203°	Rwy ldg 11,050 TDZE 439 Arprt Elev 439
---	-------------------------	---

[USAF]

FAIRBANKS INTL (PAFA)

DME required for procedure entry.		MALSR (A5)	MISSED APPROACH: Climb to 8000 on heading 203° and FAI VORTAC R-157 to 23 DME, arc northbound to JAVAH/FAI 23 DME and hold.
<p>▼ ** When ALS inop, increase CAT E RVR to 40 and vis to ¾ mile. ** When ALS inop, increase CAT E vis to 1½ miles. *** Circling not authorized W of Rwy 2L-20R. Circling not authorized to Rwy 2W-20W.</p>			
83 -29°C			

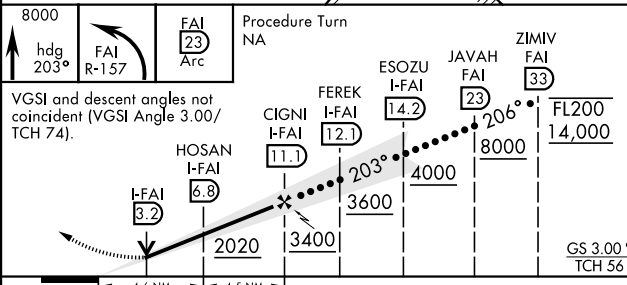
ATIS 124.4	APP CON 125.35 363.2	TOWER 118.3 257.8	GND CON 121.9	CLNC DEL 127.6
----------------------	--------------------------------	-----------------------------	-------------------------	--------------------------



AK, 20 FEB 2025 to 17 APR 2025

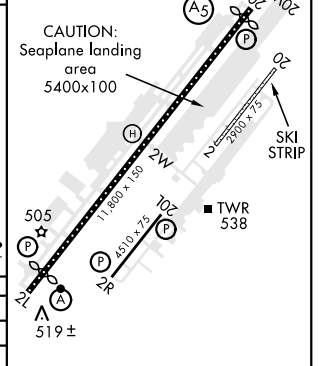
AK, 20 FEB 2025 to 17 APR 2025

EMERG SAFE ALT 100 NM 16,100



ELEV 439	TDZE 439
-----------------	-----------------

REIL Rwy 20L
TDZL/CL Rwy 2L
MIRL Rwy 2R-20L
HIRL Rwy 2L-20R



CATEGORY	C	D	E
S-ILS 20R**	639/24	200 (200-½)	
S-LOC 20R**	880/45	441 (500-¾)	
CIRCLING ***	900-1½ 461 (500-1½)	1020-2 581 (600-2)	1060-2¼ 621 (700-2¼)

Rwy 2L ldg 11,050'
Rwy 20R ldg 11,050'

HI-ILS Y or LOC Y RWY 20R