

HRDNG FOUR ARRIVAL (RNAV)

AL-1234 (FAA)

FAIRBANKS INTL (FAI)(PAFA)
FAIRBANKS, ALASKA

AK, 20 FEB 2025 to 17 APR 2025

ARRIVAL ROUTE DESCRIPTION

From RDFLG on track 291° to HRDNG, then on track 287° to cross RNDRR at or above 6000 and at or below 220K.

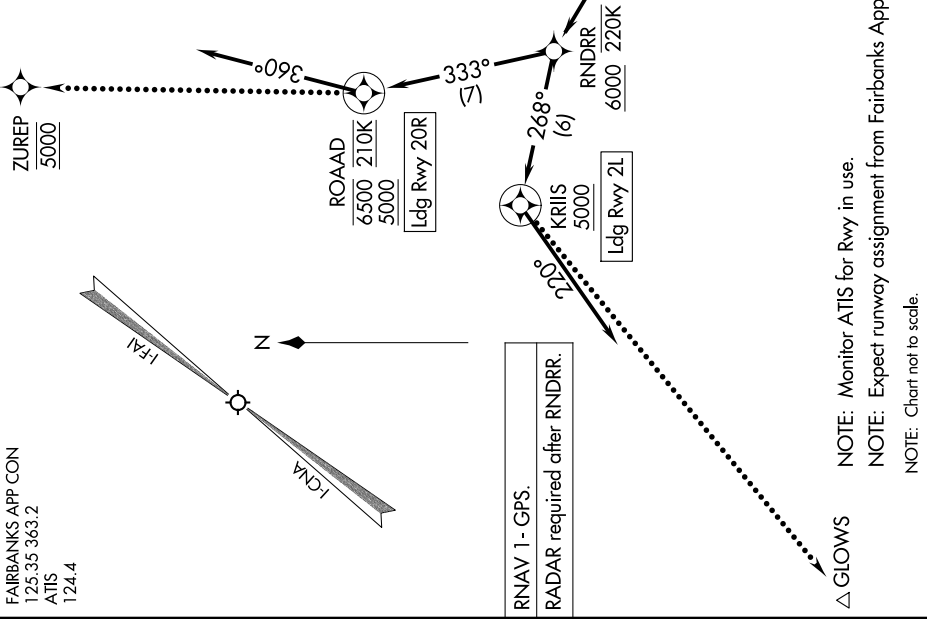
LANDING RUNWAY 2L: From RNDRR on track 268° to cross KRIIS at or above 5000, then on track 220°. Expect assigned instrument approach procedure or RADAR vectors to final approach course.

LANDING RUNWAY 20R: From RNDRR on track 333° to cross ROAAD between 5000 and 6500 and at 210K, then on track 360°. Expect assigned instrument approach procedure or RADAR vectors to final approach course.

LOST COMMUNICATIONS

RUNWAY 2L: After KRIIS, proceed on the RNAV (RNP) Z RWY 2L approach. If unable, proceed to GLOWES for the ILS RWY 2L approach.

RUNWAY 20R: After ROAAD, proceed on the RNAV (RNP) Z RWY 20R approach. If unable, proceed to ZUREP at 5000 for the ILS RWY 20R approach.



FAIRBANKS APP CON
125.35 363.2
ATIS
124.4

RNAV 1 - GPS.
RADAR required after RNDRR.

NOTE: Monitor ATIS for Rwy in use.

NOTE: Expect runway assignment from Fairbanks Approach upon initial contact.

NOTE: Chart not to scale.

RDFLG
12000

Expect 17000
when DELTA ATCAA
is active.

HRDNG FOUR ARRIVAL (RNAV)

(RDFLG.HRDNG4) 05OCT23

FAIRBANKS, ALASKA
FAIRBANKS INTL (FAI)(PAFA)

AK, 20 FEB 2025 to 17 APR 2025