

LOC/DME I-FAI 110.3 Chan 40	APP CRS 203°	Rwy Idg 11050 TDZE 439 Apt Elev 439
--	------------------------	--

ILS Z or LOC Z RWY 20R

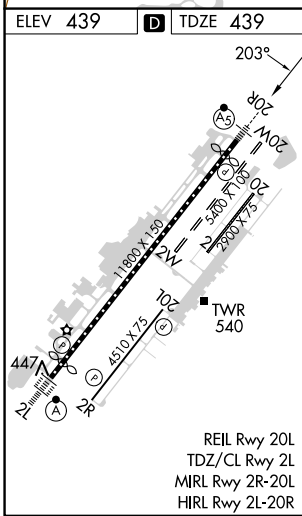
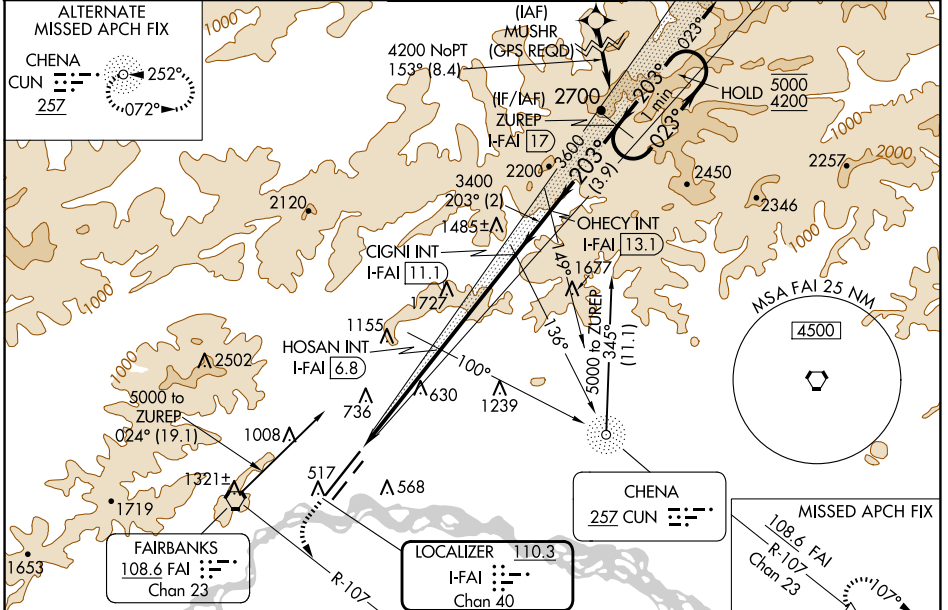
FAIRBANKS INTL (FAI) (PAFA)

DME required. DME required for procedure entry.

MALSR MISSED APPROACH: Climb to 1100 then climbing left turn to 3000 on FAI VORTAC R-107 to KRNKL/FAI VORTAC 13 DME and hold.

AS Circling NA west of Rwy 2L-20R. Circling NA to Rwy 2W and 20W. For inop ALS increase S-ILS 20R Cat E visibility to RVR 4000, increase S-LOC 20R Cat E visibility to 1 3/8 SM. #RVR 1800 authorized with use of FD or AP or HUD to DA.

ATIS 124.4	FAIRBANKS APP CON 125.35 363.2	FAIRBANKS TOWER 118.3 257.8	GND CON 121.9	CLNC DEL 127.6
----------------------	--	---------------------------------------	-------------------------	--------------------------



ELEV 439	D	TDZE 439			
1100	3000	KRNKL	VGSI and ILS glidepath not coincident (VGSI Angle 3.00/TCH 74).		
FAI R-107	FAI R-107	△			
Use I-FAI DME when on the localizer course.	OHECY INT I-FAI 13.1	ZUREP I-FAI 17	One Minute Holding Pattern		
I-FAI 3.2	HOSAN INT I-FAI 6.8	CIGNI INT I-FAI 11.1			
I-FAI 2					
	2020*	3400			
		3600			
		5000			
		4200			
			GS 3.00° TCH 56		
CATEGORY	A	B	C	D	E
S-ILS 20R#	639/24 200 (200-1/2)				
S-LOC 20R	880/24	441 (500-1/2)	880/45	441 (500-7/8)	
C CIRCLING	880-1 441 (500-1)	900-1 461 (500-1)	900-1 1/2 461 (500-1 1/2)	1020-2 581 (600-2)	1060-2 1/4 621 (700-2 1/4)

AK, 20 FEB 2025 to 17 APR 2025

AK, 20 FEB 2025 to 17 APR 2025