

APP CRS	Rwy ldg 11050
203°	TDZE 439
	Apt Elev 439

RNAV (RNP) Z RWY 20R

FAIRBANKS INTL (FAI) (PAFA)

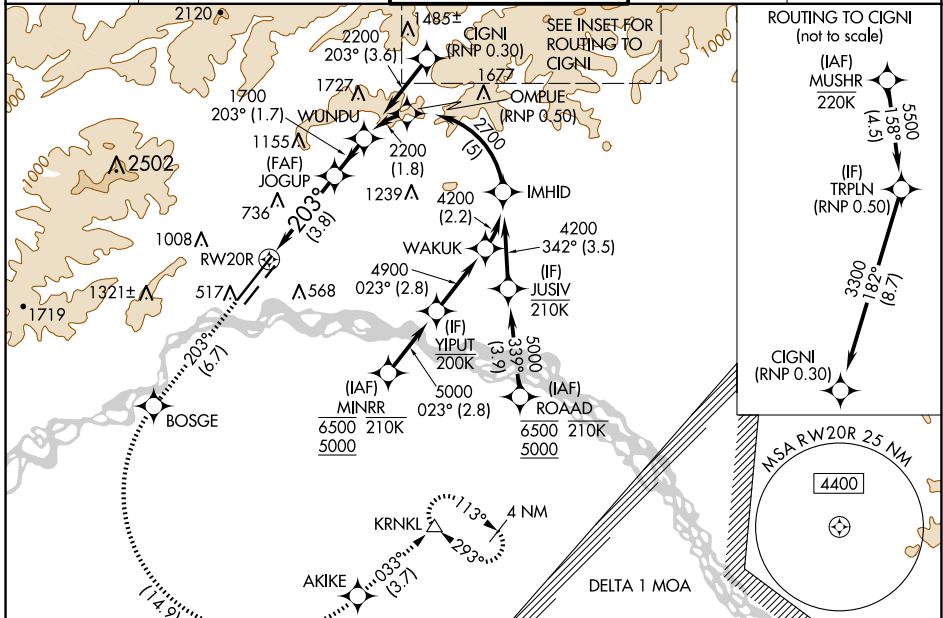
RNP AR APCH - GPS.

-29°C For uncompensated Baro-VNAV systems, procedure NA below -18°C or above 54°C. For inop ALS, increase RNP 0.30 all Cats visibility to 1 1/2 SM.

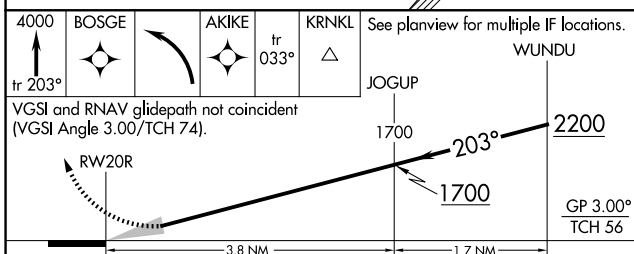
MALSR

MISSED APPROACH: Climb to 4000 on track 203° to BOSGE then left turn to AKIKE then on track 033° to KRNLK and hold.

ATIS	FAIRBANKS APP CON	FAIRBANKS TOWER	GND CON	CLNC DEL
124.4	125.35 363.2	118.3 257.8	121.9	127.6

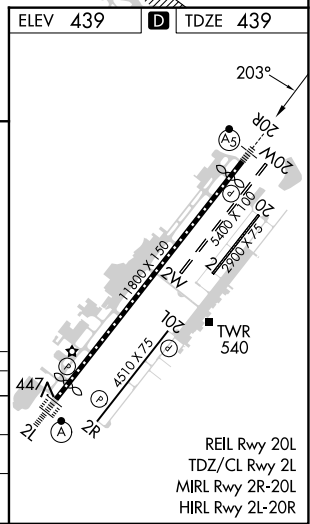


ELEV 439	TDZE 439
----------	----------



CATEGORY	A	B	C	D
RNP 0.10 DA		763/26	324 (400-1/2)	
RNP 0.30 DA		923/50	484 (500-1)	

AUTHORIZATION REQUIRED



AK, 20 FEB 2025 to 17 APR 2025

AK, 20 FEB 2025 to 17 APR 2025