

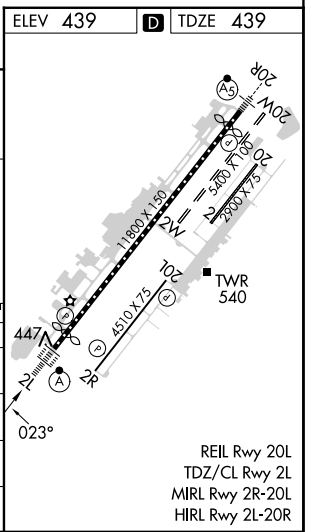
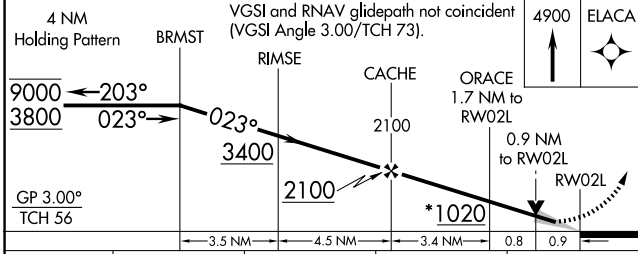
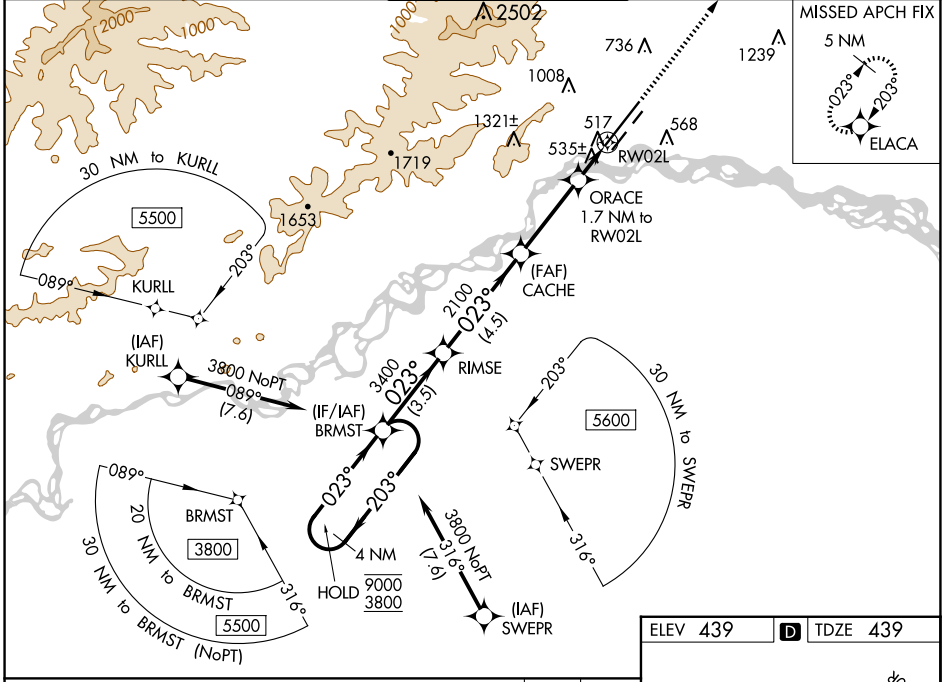
WAAS CH <b>57915</b> <b>W02B</b>	APP CRS <b>023°</b>	Rwy Idg <b>11050</b> TDZE <b>439</b> Apt Elev <b>439</b>
--	------------------------	--

# RNAV (GPS) Y RWY 2L

FAIRBANKS INTL (FAI) (PAFA)

RNP APCH - GPS.	ALSF-2	MISSED APPROACH: Climb to 4900 direct ELACA and hold, continue climb-in hold to 4900.
<p><b>▼</b> Circling NA west of Rwy 2L-20R. Circling NA to Rwy 2W and 20W.</p> <p><b>⚠</b> -29°C For uncompensated Baro-VNAV systems, LNAV/VNAV NA below -19°C or above 54°C. For inop ALS, increase LNAV/VNAV all Cats visibility to RVR 4500 and LNAV Cat C/D visibility to RVR 5500.</p>		

ATIS <b>124.4</b>	FAIRBANKS APP CON <b>125.35 363.2</b>	FAIRBANKS TOWER <b>118.3 257.8</b>	GND CON <b>121.9</b>	CLNC DEL <b>127.6</b>
----------------------	--	---------------------------------------	-------------------------	--------------------------



CATEGORY	A	B	C	D
LPV DA		639/18	200 (200-½)	
LNAV/VNAV DA		720/24	281 (300-½)	
LNAV MDA	800/24	361 (400-½)	800/40	361 (400-¾)
<b>C</b> CIRCLING	880-1 441 (500-1)	900-1 461 (500-1)	900-1½ 461 (500-1½)	1020-2 581 (600-2)

AK, 20 FEB 2025 to 17 APR 2025

AK, 20 FEB 2025 to 17 APR 2025