

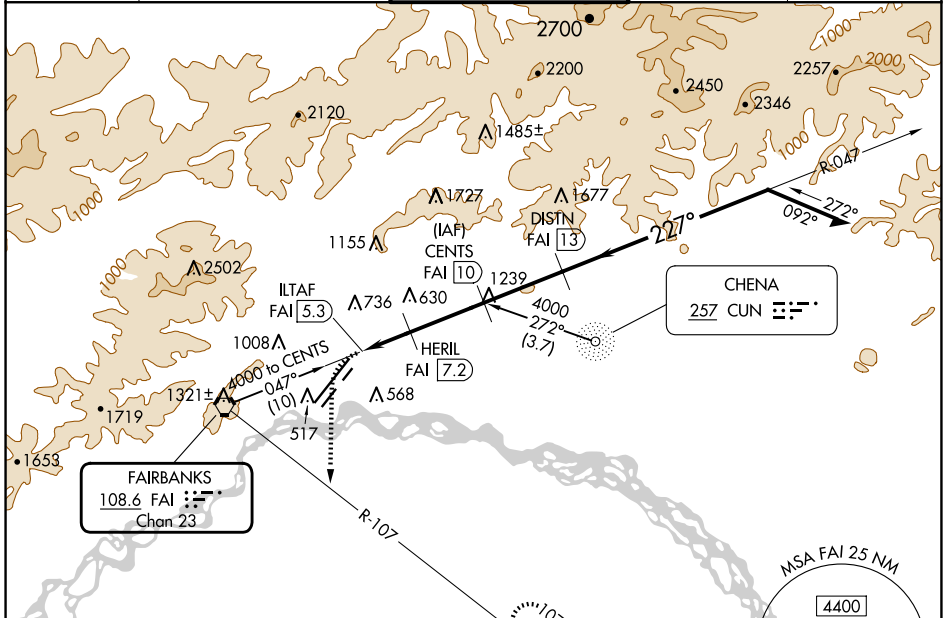
VORTAC FAI 108.6 Chan 23	APP CRS 227°	Rwy Idg TDZE 439 Apt Elev 439
---------------------------------------	------------------------	---

TACAN RWY 20R

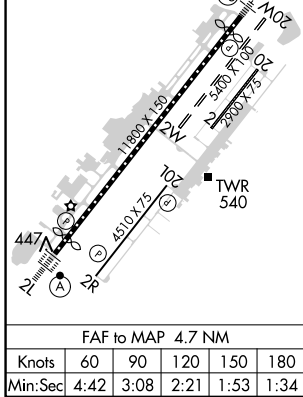
FAIRBANKS INTL (FAI) (PAFA)

	Circling NA to Rwy 2W and 20W. Circling NA west of Rwy 2L-20R. Rwy 20R helicopter visibility reduction below RVR 4000 NA. Inop table does not apply.	MALSR 	MISSED APPROACH: Climbing left turn to 4000 on heading 160° and FAI VORTAC R-107 to KRNL/FAI 13 DME and hold, continue climb-in-hold to 4000.	
		ATIS 124.4	FAIRBANKS APP CON 125.35 363.2	FAIRBANKS TOWER 118.3 257.8

ATIS 124.4	FAIRBANKS APP CON 125.35 363.2	FAIRBANKS TOWER 118.3 257.8	GND CON 121.9	CLNC DEL 127.6
----------------------	--	---------------------------------------	-------------------------	--------------------------



ELEV 439	D	TDZE 439
REIL Rwy 20L		
TDZ/CL Rwy 2L		
MIRL Rwy 2R-20L		
HIRL Rwy 2L-20R		



EMERGENCY SAFE ALTITUDE 100 NM 16000

4000	FAI R-107	KRNL	CENTS FAI 10	VGSi and descent angles not coincident (VGSi Angle 3.00/TCH 74)	
hdg 160°				047°	Remain within 15 NM
		HERIL FAI 7.2		227°	4000
		ILTAF FAI 5.3		3.00° TCH 60	3300
					2200
					1300
					DISTN FAI 13
					0.7
					1.8 NM
					2.8 NM
					3 NM
CATEGORY	A	B	C	D	E
S-20R	880/55	441 (500-1)	880-1 3/8	441 (500-1 3/8)	1000-1 5/8 561 (600-1 5/8)
C CIRCLING	880-1 441 (500-1)	900-1 461 (500-1)	900-1 1/2 461 (500-1 1/2)	1020-2 581 (600-2)	1120-2 1/2 681 (700-2 1/2)

FAIRBANKS, ALASKA
Orig 15JUN23

64°49'N-147°51'W

FAIRBANKS INTL (FAI) (PAFA)
TACAN RWY 20R

AK, 20 FEB 2025 to 17 APR 2025

AK, 20 FEB 2025 to 17 APR 2025