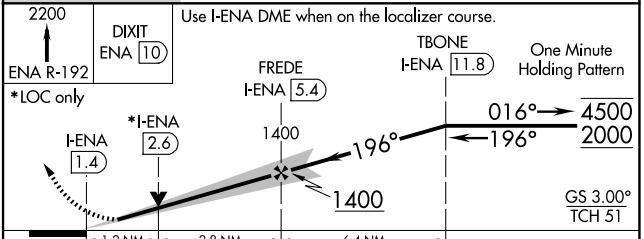
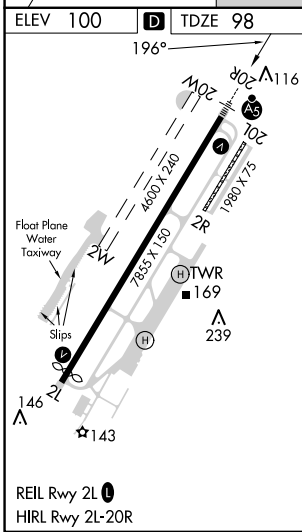
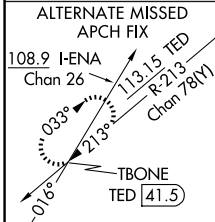
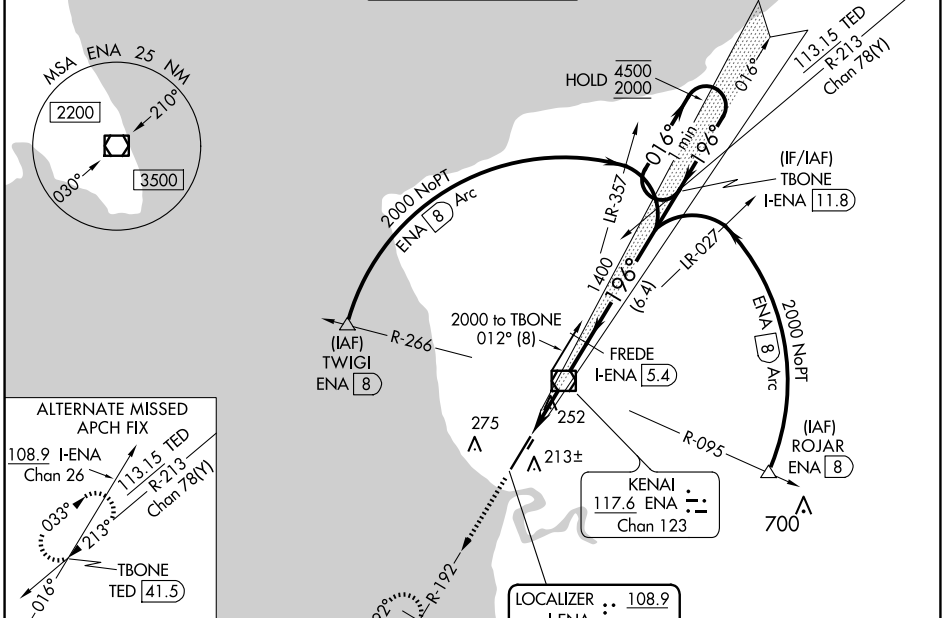


LOC/DME I-ENA 108.9 Chan 26	APP CRS 196°	Rwy ldg 7575 TDZE 98 Apt Elev 100
--	------------------------	--

ILS Z or LOC Z RWY 20R

KENAI MUNI (ENA) (PAEN)

DME required. ▼ Circling NA to Rwys 2W and 20W. Circling Rwy 2R, 20L NA at night. # RVR 1800 authorized with use of FD or AP or HUD to DA.		MALSRR 	MISSED APPROACH: Climb to 2200 on ENA VOR/DME R-192 to DIXIT/10 DME and hold.	
ATIS 133.35	ANCHORAGE CENTER 125.7 379.1	KENAI TOWER ★ 121.3 (CTAF) 239.3	GND CON 118.75	KENAI RADIO 122.65



CATEGORY	A	B	C	D
S-ILS 20R#	298/24 200 (200-1/2)			
S-LOC 20R	520/24 422 (500-1/2)	520/40 422 (500-3/4)		
<input checked="" type="checkbox"/> CIRCLING	560-1 460 (500-1)	580-1 480 (500-1)	580-1 1/2 480 (500-1/2)	680-2 580 (600-2)

AK, 20 FEB 2025 to 17 APR 2025

AK, 20 FEB 2025 to 17 APR 2025