

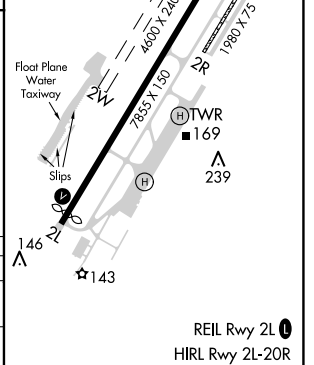
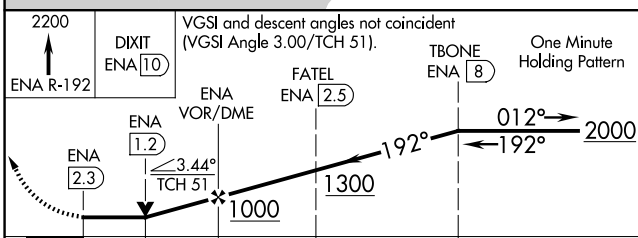
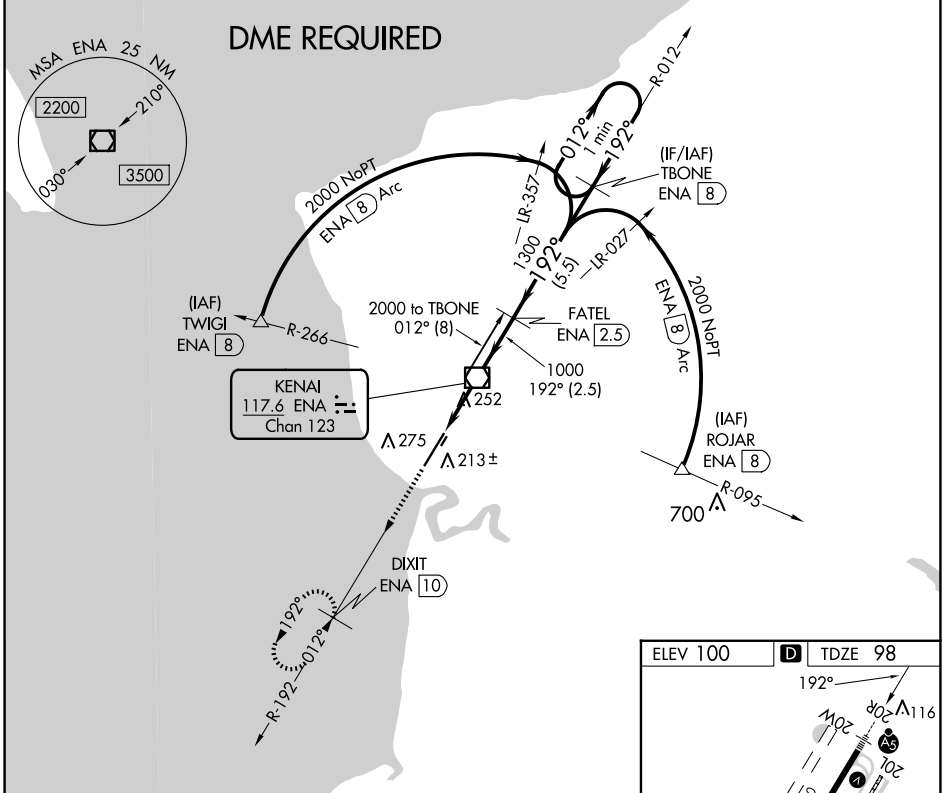
VOR/DME ENA 117.6 Chan 123	APP CRS 192°	Rwy Idg 7575 TDZE 98 Apt Elev 100
--	------------------------	--

VOR RWY 20R

KENAI MUNI (ENA) (PAEN)

<p>⚠ Circling Rwy 2R, 20L NA at night. DME required. VDP NA when using Soldotna altimeter setting. When local altimeter setting not received, use Soldotna altimeter setting and increase all MDA 40 feet, increase S-20R Cats C and D visibility to RVR 5000. Circling Rwy 2W, 20W NA.</p>	<p>MALSR</p>	<p>MISSED APPROACH: Climb to 2200 on ENA VOR/DME R-192 to DIXIT/ENA VOR/DME 10 DME and hold.</p>
	<p>ATIS 133.35 ANCHORAGE CENTER 125.7 379.1 KENAI TOWER* 121.3 (CTAF) 239.3 GND CON 118.75 KENAI RADIO 122.65</p>	

ATIS 133.35	ANCHORAGE CENTER 125.7 379.1	KENAI TOWER* 121.3 (CTAF) 239.3	GND CON 118.75	KENAI RADIO 122.65
-----------------------	--	---	--------------------------	------------------------------



CATEGORY	A	B	C	D
S-20R	520/24 422 (500-½)		520/40 422 (500-¾)	
CIRCLING	560-1 460 (500-1)	580-1 480 (500-1)	580-1½ 480 (500-½)	680-2 580 (600-2)

AK, 20 FEB 2025 to 17 APR 2025

AK, 20 FEB 2025 to 17 APR 2025