

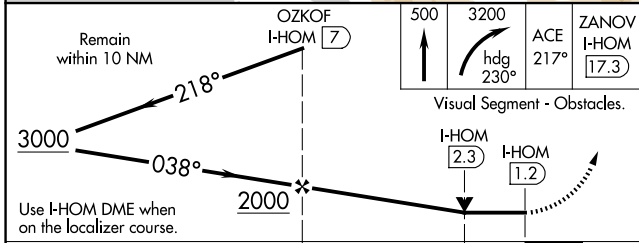
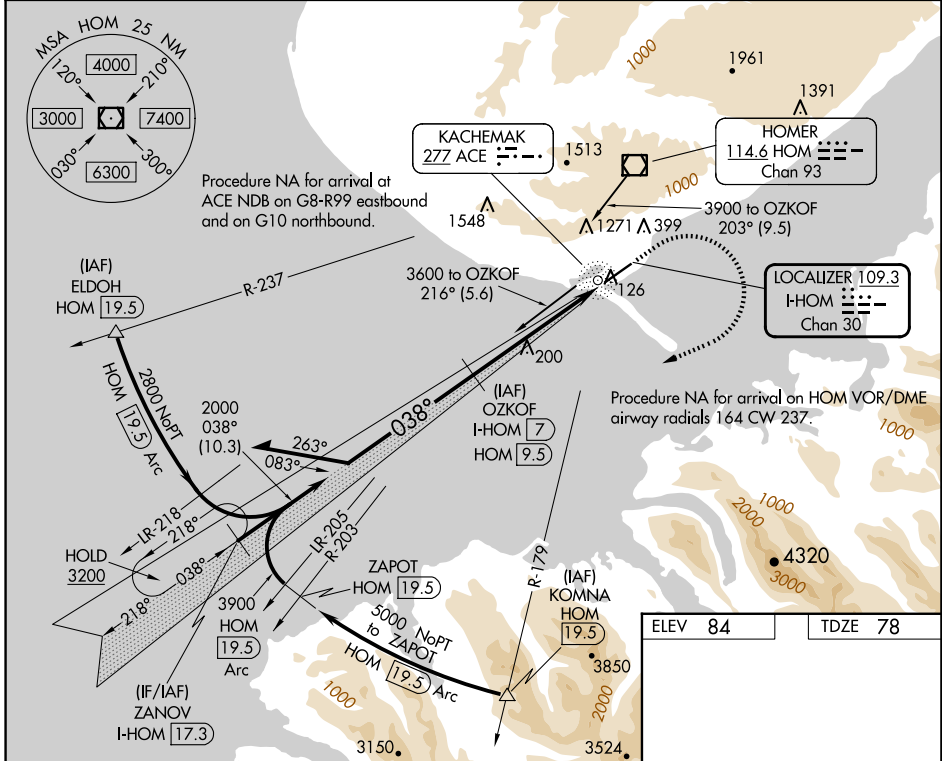
LOC/DME I-HOM <b>109.3</b> Chan <b>30</b>	APP CRS <b>038°</b>	Rwy Idg TDZE Apt Elev	<b>6701</b> <b>78</b> <b>84</b>
-------------------------------------------------	------------------------	-----------------------------	---------------------------------------

# LOC RWY 4

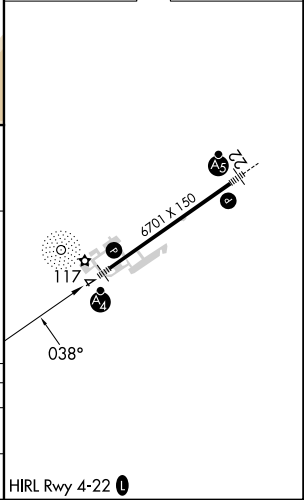
## HOMER (HOM)(PAHO)

ADF or DME required for procedure entry. DME required.	MALSF 	MISSED APPROACH: Climb to 500 then climbing right turn to 3200 on heading 230° and on ACE NDB bearing 217° to ZANOV/I-HOM 17.3 DME and hold.
Circling NA northwest of Rwy 4-22. Inop table does not apply to Cats A and B. For inop ALS increase Cat C/D visibility to 1½ SM. Circling NA to waterways 6W and 24W.		

AFIS <b>135.65</b>	ANCHORAGE CENTER <b>125.9 270.3</b>	HOMER RADIO <b>123.6 (CTAF)</b>	UNICOM <b>122.7 123.0 123.05</b>
-----------------------	----------------------------------------	------------------------------------	-------------------------------------



ELEV 84	TDZE 78
---------	---------



CATEGORY	A	B	C	D
S-LOC 4	460-1 382 (400-1)			
CIRCLING	500-1 416 (500-1)	540-1 456 (500-1)	540-1½ 456 (500-1½)	760-2¼ 676 (700-2¼)

AK, 20 FEB 2025 to 17 APR 2025

AK, 20 FEB 2025 to 17 APR 2025