

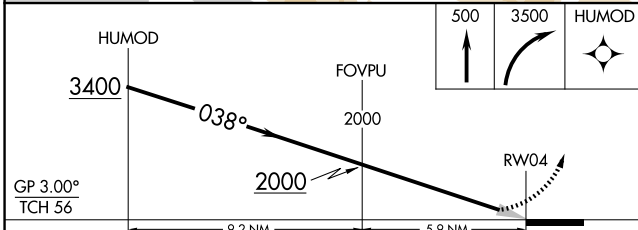
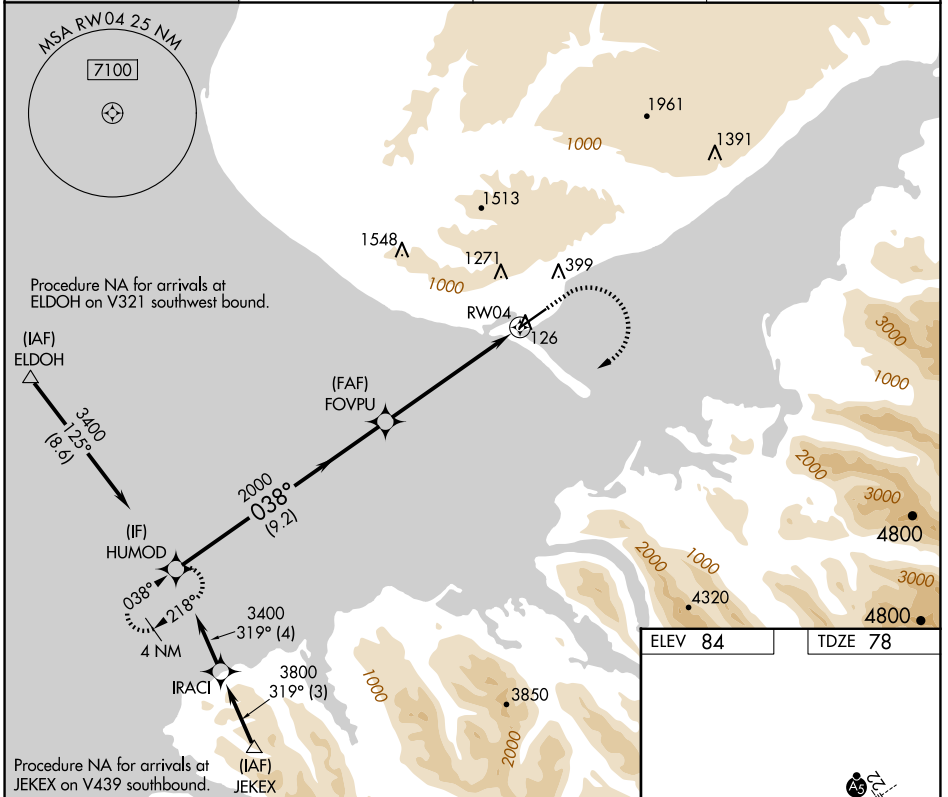
WAAS CH <b>86302</b> <b>W04A</b>	APP CRS <b>038°</b>	Rwy Idg TDZE <b>78</b> Apt Elev <b>84</b>	<b>6701</b>
--	------------------------	---	-------------

# RNAV (GPS) Z RWY 4

HOMER (HOM) (PAHO)

RNP APCH - GPS.		MALSF	MISSED APPROACH: Climb to 500 then climbing right turn to 3500 direct HUMOD and hold.
<p>▼ For uncompensated Baro-VNAV systems, LNAV/VNAV NA below -21°C or above 54°C. Inop table does not apply to LPV all Cats.</p>			

AFIS <b>135.65</b>	ANCHORAGE CENTER <b>125.9 270.3</b>	HOMER RADIO <b>123.6 (CTAF)</b>	UNICOM <b>122.7 123.0 123.05</b>
-----------------------	--	------------------------------------	-------------------------------------



CATEGORY	A	B	C	D
LPV DA		444-1	366 (400-1)	
LNAV/VNAV DA		558-1 $\frac{3}{8}$	480 (500-1 $\frac{3}{8}$ )	

ELEV 84	TDZE 78
---------	---------

HIRL RWY 4-22

AK, 20 FEB 2025 to 17 APR 2025

AK, 20 FEB 2025 to 17 APR 2025