


HI-ILS Z or LOC Z RWY 12

LOC/DME I-AKN 110.3 Chan 40	APCH CRS 121°	Rwy Idg TDZE Arpt Elev 8501 62 73	[USAF]	KING SALMON (AKN) (PAKN)
---	-------------------------	---	--------	--------------------------

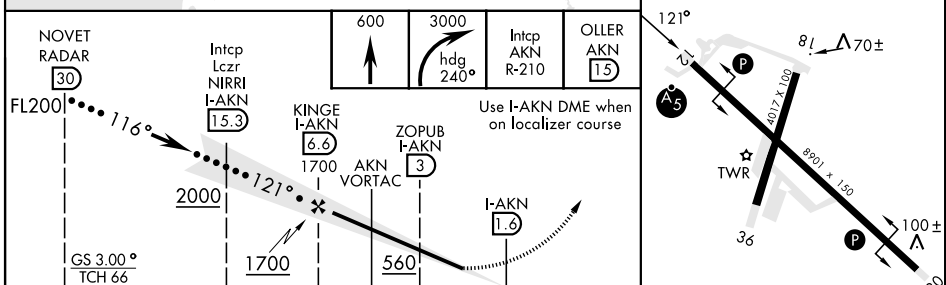
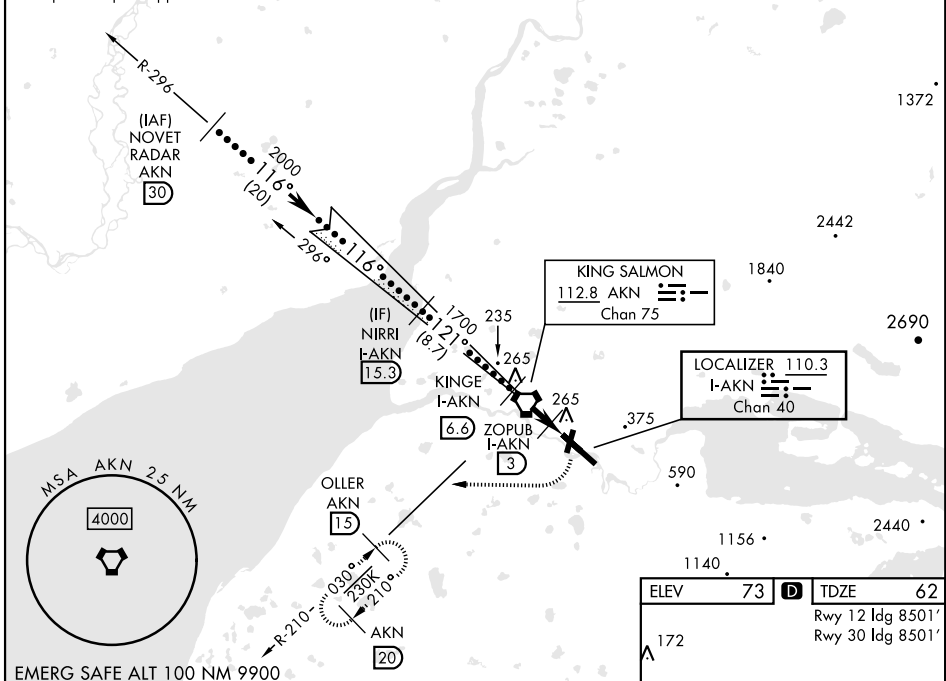
DME required. RADAR required for procedure entry.

MALSRL  MISSED APPROACH: Climb to 600, then climbing right turn to 3000 via heading 240° and AKN VORTAC R-210 to OLLER/AKN 15 DME and hold.

31° C

ATIS 128.8	ANCHORAGE CENTER 124.8 354.0	TOWER ★ 118.3 279.5	GND CON 121.9	CTAF 121.9 352.05	UNICOM 122.95
----------------------	--	-------------------------------	-------------------------	-----------------------------	-------------------------

† When control tower closed, increase RVR to 50.
Autopilot coupled approaches not authorized below 700' MSL.



ELEV	73	TDZE	62
Rwy 12 Idg 8501'			
Rwy 30 Idg 8501'			

CATEGORY	C	D	E
S-ILS 12*†	262/24	200 (300-½)	
S-LOC 12**†	420/30	358 (400-¾)	
CIRCLING	580-1½	900-2¾	960-3
	507 (600-1½)	827 (900-2¾)	887 (900-3)

KING SALMON, ALASKA 58°41'N-156°39'W KING SALMON (AKN) (PAKN)

HI-ILS Z or LOC Z RWY 12

AK, 20 FEB 2025 to 17 APR 2025

AK, 20 FEB 2025 to 17 APR 2025