

KING SALMON, ALASKA

# HI-VOR Z or TACAN Z RWY 12

VORTAC AKN <b>112.8</b> Chan <b>75</b>	APCH CRS <b>116°</b>	Rwy ldg <b>8501</b> TDZE <b>62</b> Arpt Elev <b>73</b>
--	-------------------------	--

[USAF]

KING SALMON (AKN) (PAKN)

DME required. RADAR required for procedure entry.

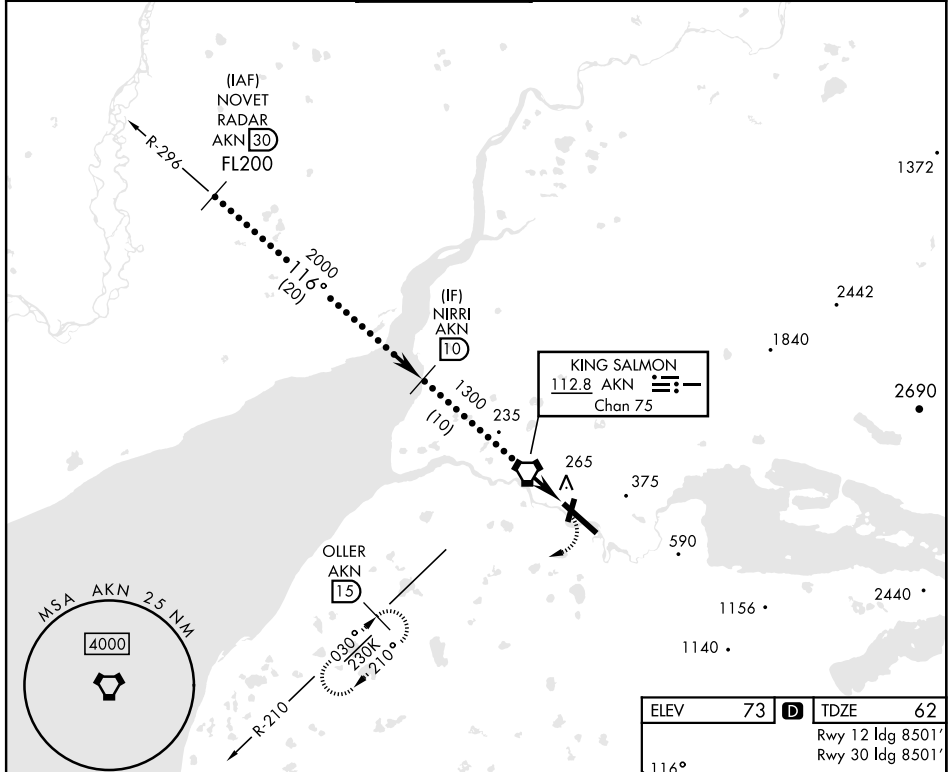


MISSED APPROACH: Climbing right turn to 3000 on heading 238° and AKN VORTAC R-210 to OLLER/15 DME and hold.

▼ \*When ALS inop, increase vis to 1½ miles.  
When control tower closed, increase RVR to 50.

☁ -31° C

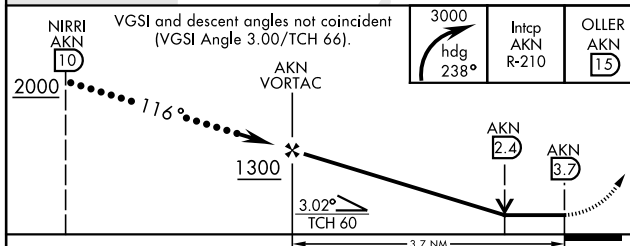
ATIS <b>128.8</b>	ANCHORAGE CENTER <b>124.8 354.0</b>	TOWER ★ <b>118.3 279.5</b>	GND CON <b>121.9</b>	CTAF <b>121.90 352.05</b>	UNICOM <b>122.95</b>
----------------------	--	-------------------------------	-------------------------	------------------------------	-------------------------



AK, 20 FEB 2025 to 17 APR 2025

AK, 20 FEB 2025 to 17 APR 2025

EMERG SAFE ALT 100 NM 9900



ELEV 73	TDZE 62
Rwy 12 ldg 8501'	
Rwy 30 ldg 8501'	

CATEGORY	C	D	E
S-12*	520-45	458	(500-7½)
CIRCLING	580-1½	900-2¾	960-3
	507 (600-1½)	827 (900-2¾)	887 (900-3)

HIRL Rwy 12-30

MIRL Rwy 18-36

KING SALMON, ALASKA  
Amdt 5 26DEC24

58°41'N-156°39'W

KING SALMON (AKN) (PAKN)

# HI-VOR Z or TACAN Z RWY 12