

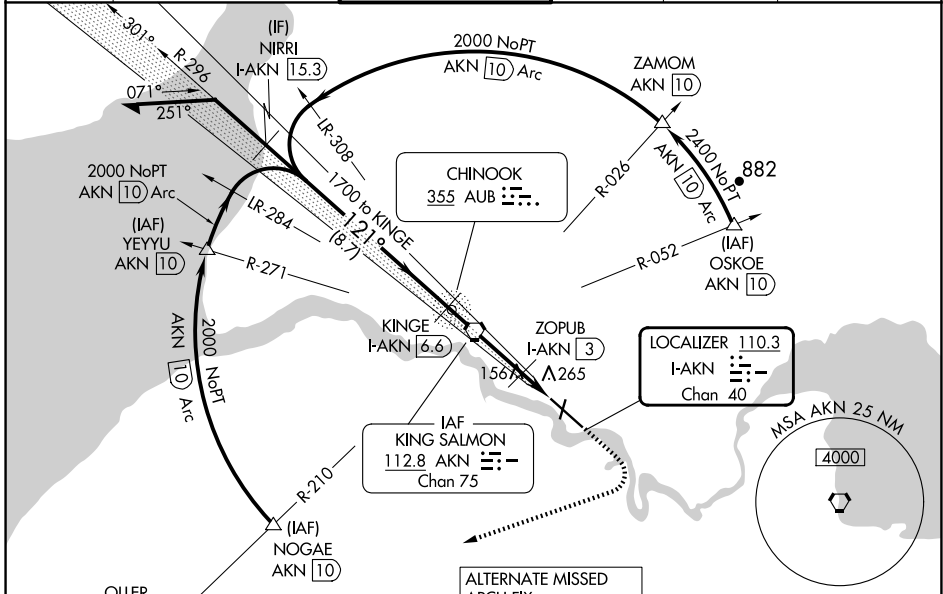
LOC/DME I-AKN 110.3 Chan 40	APP CRS 121°	Rwy Idg TDZE Apt Elev	8501 62 73
--	------------------------	-----------------------------	---------------------------------------

ILS Y or LOC Y RWY 12

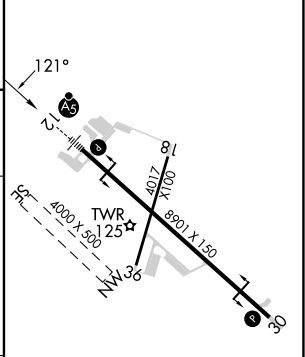
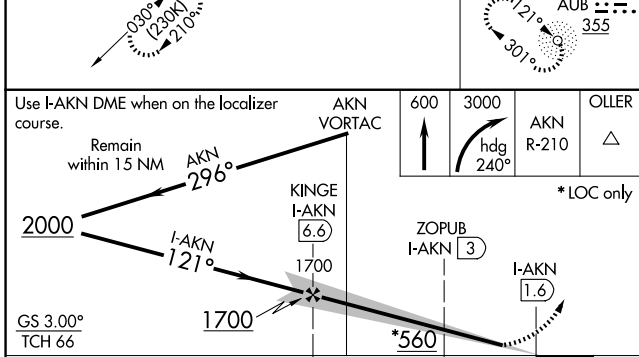
KING SALMON (AKN)(PAKN)

DME required.	MALSRL	MISSED APPROACH: Climb to 600 then climbing right turn to 3000 on heading 240° and AKN VORTAC R-210 to OLLER/15 DME and hold.
<p>▼ Autopilot coupled approach NA below 700. For inop ALS, increase S-ILS 12 Cat E visibility to RVR 4000. For inop ALS, increase S-LOC 12 Cat C-E visibility to RVR 5500. When control tower closed: increase S-ILS 12 and S-LOC 12 visibilities to RVR 5000 all Cats. When control tower closed, inop table does not apply.</p>		

ATIS 128.8	ANCHORAGE CENTER 124.8 354.0	KING SALMON TOWER* 118.3 279.5	GND CON 121.9	UNICOM 122.95	CTAF 121.9 352.05
----------------------	--	--	-------------------------	-------------------------	-----------------------------



ELEV 73	TDZE 62
---------	---------



CATEGORY	A	B	C	D	E
S-ILS 12	262/24 200 (200-½)				
S-LOC 12	420/24	358 (400-½)	420/30	358 (400-¾)	

MIRL Rwy 18-36	
HIRL Rwy 12-30	

AK, 20 FEB 2025 to 17 APR 2025

AK, 20 FEB 2025 to 17 APR 2025