

WAAS CH 72608 W12A	APP CRS 121°	Rwy Idg TDZE 62 Apt Elev 73
--	------------------------	---

RNAV (GPS) RWY 12

KING SALMON (AKN)(PAKN)

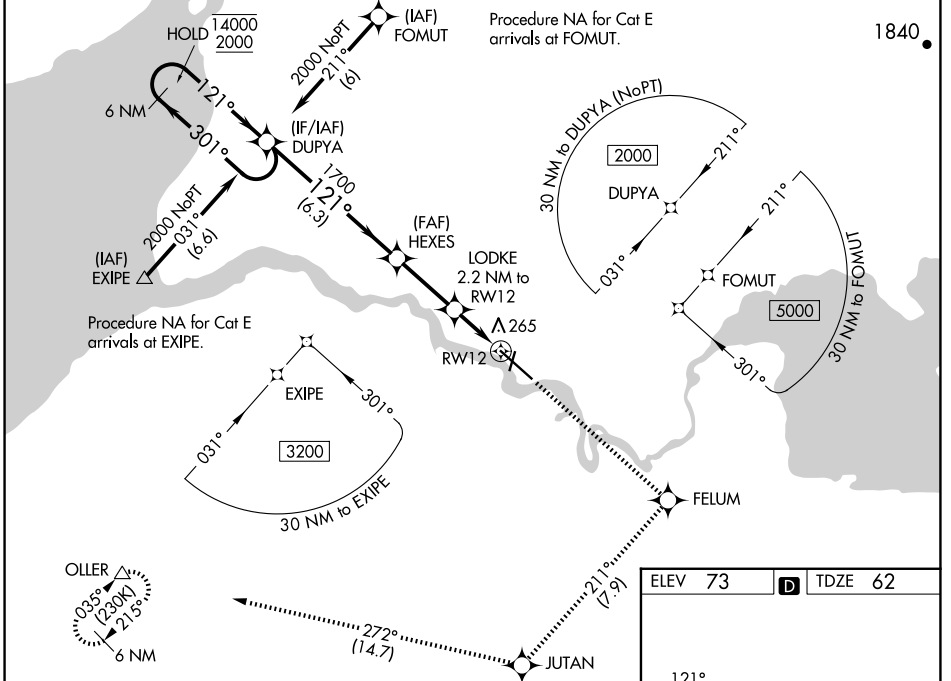
RNP APCH-GPS.

⚠ For uncompensated Baro-VNAV systems, procedure NA below -18°C or above 54°C.
⚠ For inop ALS, increase LPV Cat E visibility to RVR 4000, increase LNAV/VNAV all Cats visibility to RVR 5000 and increase LNAV Cat E visibility to 1½ SM. When control tower closed, LPV, LNAV/VNAV and LNAV visibility RVR 5000. When control tower closed, inop table does not apply to LPV, LNAV/VNAV and LNAV Cats A/B.
 # RVR 1800 authorized with use of FD or AP or HUD to DA (NA when control tower closed).

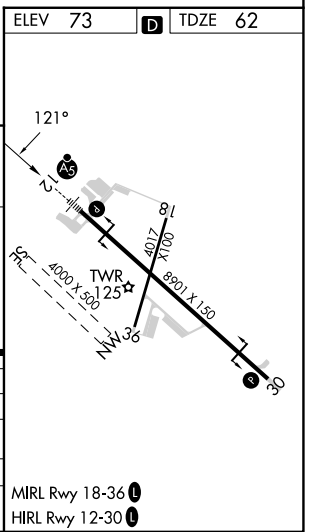
MALS R

MISSED APPROACH: Climb to 3000 direct FELUM and on track 211° to JUTAN and on track 272° to OLLER and hold.

ATIS 128.8	ANCHORAGE CENTER 124.8 354.0	KING SALMON TOWER* 118.3 279.5	GND CON 121.9	UNICOM 122.95	CTAF 121.9 352.05
----------------------	--	--	-------------------------	-------------------------	-----------------------------



VGSi and RNAV glidepath not coincident (VGSi Angle 3.00/TCH 66).		3000	FELUM	tr 211°	JUTAN	tr 272°	OLLER
6 NM Holding Pattern		DUPYA		HEXES		*LNAV only	
14000 ← 301°		1700		LODKE 2.2 NM to RW12 *1.2 NM to RW12		RW12	
2000 ← 121°		*820		6.3 NM		2.8 NM	
GP 3.00°		1700		1 NM		1.2 NM	
TCH 55							
CATEGORY	A	B	C	D	E		
LPV DA#	262/24					200 (200-½)	
LNAV/VNAV DA	426/35					364 (400-¾)	
LNAV MDA	520/24		458 (500-½)		520/45		458 (500-¾)
CIRCLING	580-1		507 (600-1)		580-1½		900-2¾
					507 (600-1½)		827 (900-2¾)
							887 (900-3)



AK, 20 FEB 2025 to 17 APR 2025

AK, 20 FEB 2025 to 17 APR 2025