


LOC I-BER	APP CRS	Rwy ldg	6190
108.9	234°	TDZE	18
		Apt Elev	20

ILS Z or LOC Z RWY 23

ADAK (ADK) (PADK)

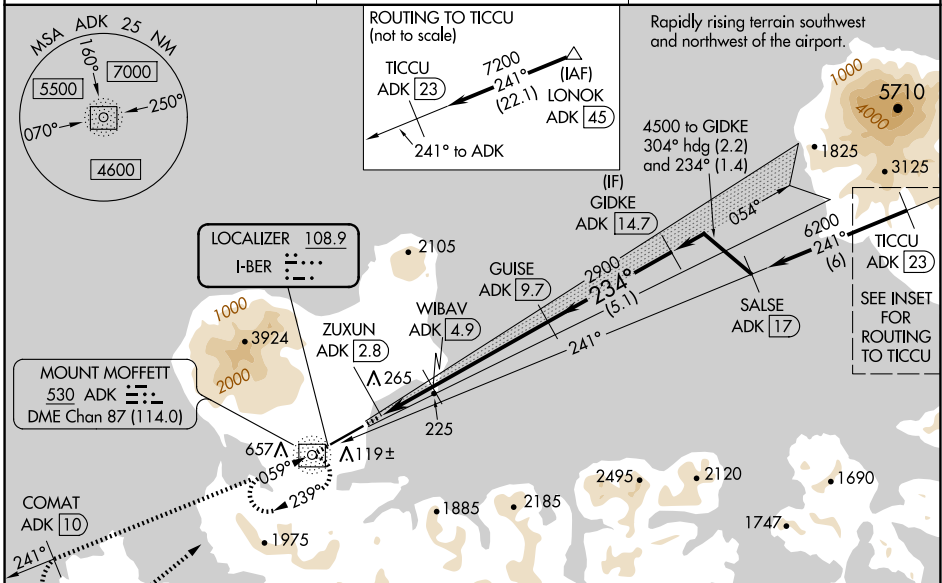
ADF and DME required.

⚠ Circling NA at night. Circling NA northwest of Rwy 5-23. Rwy 23 helicopter visibility reduction below 3/4 SM NA. DME from ADK NDB. Simultaneous reception of I-BER and ADK DME required. Cat E for USAF/USN use only.

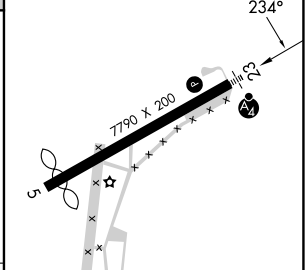
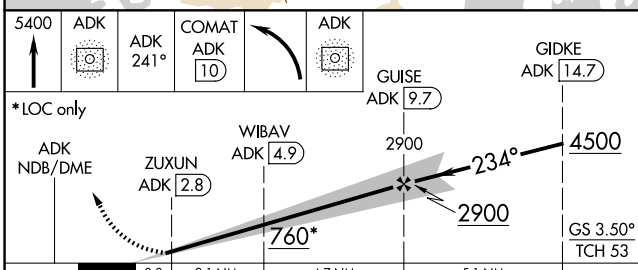
MALS 

MISSED APPROACH: Climb to 5400 direct ADK NDB/DME and on the 241° bearing from ADK NDB/DME to COMAT/ADK 10 DME and left turn direct ADK NDB/DME and hold. Missed approach requires minimum climb of 409 feet per NM to 2700; if unable to meet climb gradient, see ILS Y or LOC Y RWY 23.

AWOS-3P 134.5	ANCHORAGE CENTER 126.4 254.3	CTAF 122.9
-------------------------	--	----------------------



ELEV 20	TDZE 18
---------	---------



CATEGORY	A	B	C	D	E
S-ILS 23	309/50 291 (300-1)				
S-LOC 23	480/55 462 (500-1)		480-1 3/8 462 (500-1 3/8)		
CIRCLING	720-1 700 (700-1)		1060-3 1040 (1100-3)	2400-3 2380 (2400-3)	2440-3 2420 (2500-3)

REIL Rwy 23 **Ⓛ**

HIRL Rwy 5-23 **Ⓛ**

AK, 20 FEB 2025 to 17 APR 2025

AK, 20 FEB 2025 to 17 APR 2025