

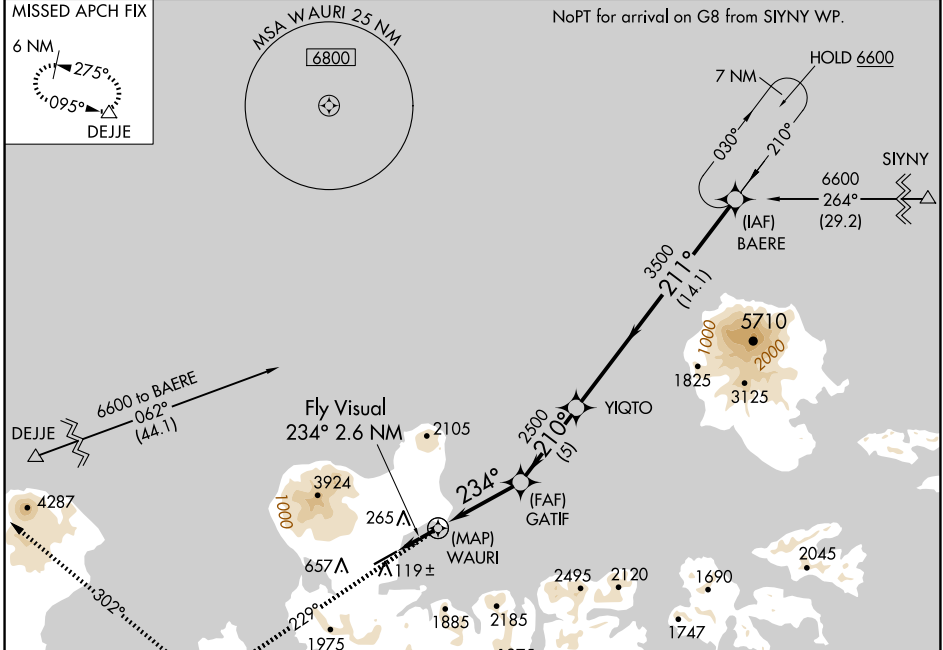
APP CRS	Rwy Idg	6190
234°	TDZE	17
	Apt Elev	20

RNAV (GPS) RWY 23

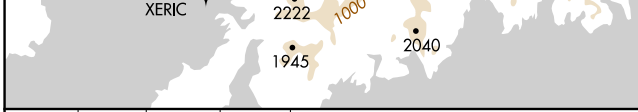
ADAK (ADK)(PADK)

RNP APCH-GPS.	MALS	MISSED APPROACH: Climb to 6600 on course 229° to XERIC, and right turn on course 302° to DEJJE and hold.
Circling not authorized at night. Circling NA northwest of Rwy 5-23.		

AWOS-3P 134.5	ANCHORAGE CENTER 126.4 254.3	CTAF 122.9
-------------------------	--	----------------------

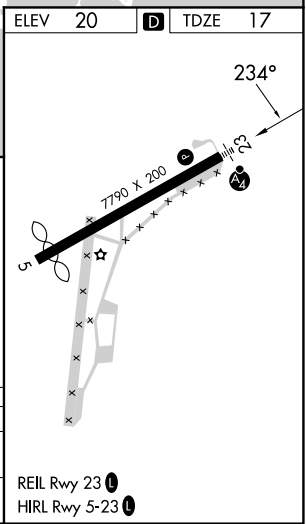


ELEV	20		TDZE	17
------	----	--	------	----



6600	XERIC	DEJJE	BAERE
crs 229°			
	crs 302°		
Fly Visual	GATIF	YIQTO	6600
234° 2.6 NM			
WAURI			Procedure Turn NA
	234°	210°	
	5 NM	5 NM	14.1 NM

CATEGORY	A	B	C	D
LNAV MDA	1220-3 1203 (1200-3)			
CIRCLING	1220-3	1200 (1200-3)	NA	



REIL Rwy 23

HIRL Rwy 5-23

ADAK (ADK)(PADK)

RNAV (GPS) RWY 23

AK, 20 FEB 2025 to 17 APR 2025

AK, 20 FEB 2025 to 17 APR 2025