

SHEMYA I, ALEUTIAN I, ALASKA

RNAV (GPS) RWY 10

APCH CRS	Rwy Idg 10,004
107°	TDZE 98
	Arpt Elev 98

[USAF]

EARECKSON AS (SYA) (PASY)

RNP APCH - GPS

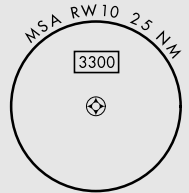
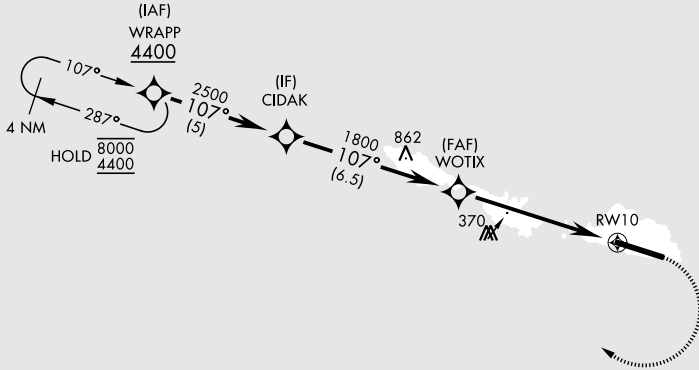
ALSF-1

MISSED APPROACH: Climbing right turn to 4400 direct WRAPP and hold, continue climb-in-hold to 4400.

*When ALS inop, increase CAT CDE vis to 1½ miles.
**Circling not authorized N of Rwy 10-28.

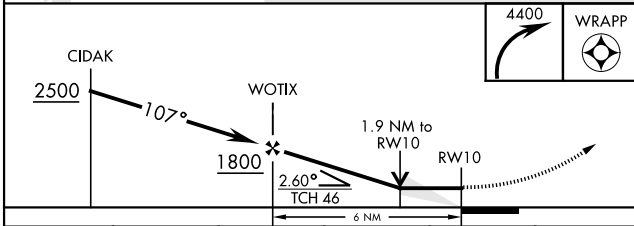
ANCHORAGE CENTER
119.1 339.8

CTAF
127.2 352.05

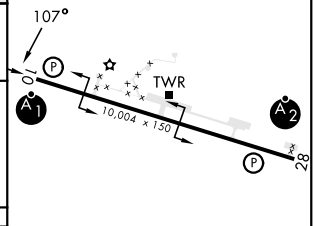


2280

EMERG SAFE ALT 100 NM 5400



ELEV	98	TDZE	98
------	----	------	----



CATEGORY	A	B	C	D	E
LNAV MDA*	640-1	542 (600-1)	640-1½	542 (600-1½)	
CIRCLING**	640-1	542 (600-1)	640-1½	660-2	680-2
			542 (600-1½)	562 (600-2)	582 (600-2)

HIRL Rwy 10-28
REIL Rwy 10 and 28

SHEMYA I, ALEUTIAN I, ALASKA

52° 43' N-174° 07' E

EARECKSON AS (SYA) (PASY)

Amdt 1 05SEP24

RNAV (GPS) RWY 10

AK, 20 FEB 2025 to 17 APR 2025

AK, 20 FEB 2025 to 17 APR 2025