

SHEMYA I, ALEUTIAN I, ALASKA

VOR/DME or TACAN RWY 28

VORTAC SYA 109.0 Chan 27	APCH CRS 280°	Rwy ldg 10,004 TDZE 93 Arprt Elev 98
--	-------------------------	---

[USAF]

EARECKSON AS (SYA) (PASY)

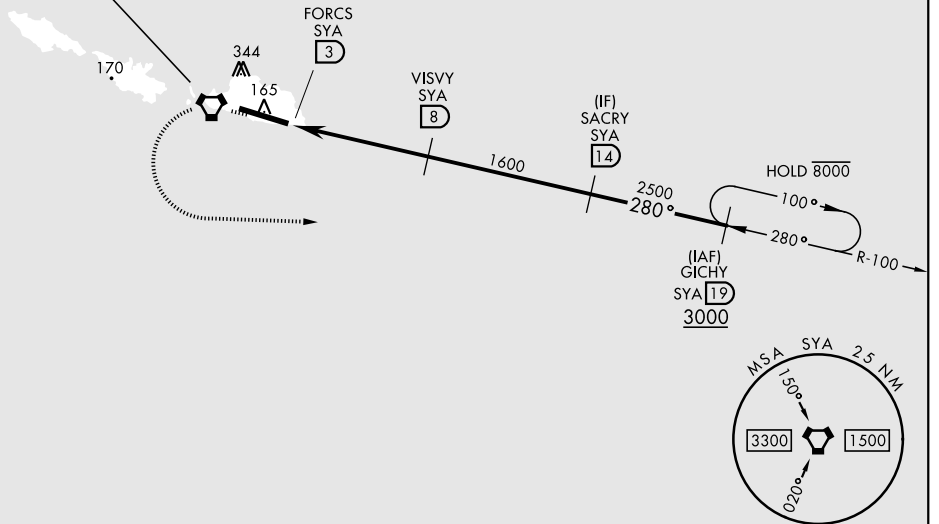
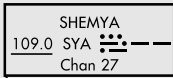
* When ALS inop, increase CAT CDE vis to 1½ miles.
 ** Circling not authorized N of Rwy 10-28.



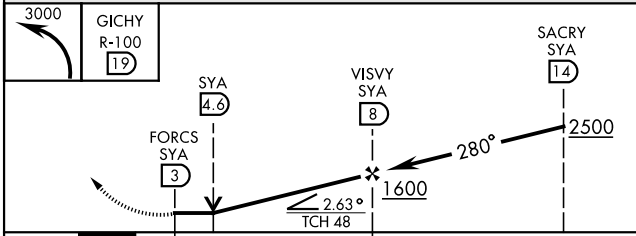
MISSED APPROACH: Climbing left turn to 3000 direct GICHY and hold.

ANCHORAGE CENTER 119.1 339.8	CTAF 127.2 352.05
--	-----------------------------

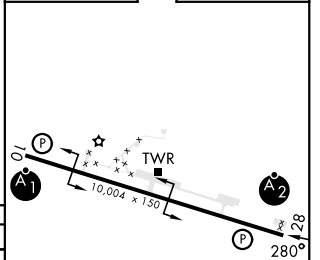
CAUTION: Numerous obstructions in area N of Rwy 10-28.
 Missed approach requires use of RNAV or ATC RADAR monitoring.



EMERG SAFE ALT 100 NM 5400



ELEV	98	TDZE	93
------	----	------	----



CATEGORY	A	B	C	D	E
S-28 *	620-1 527 (600-1)		620-1¼ 527 (600-1¼)		
CIRCLING **	620-1 522 (600-1)		620-1½ 522 (600-1½)	660-2 582 (600-2)	680-2 582 (600-2)

HIRL Rwy 10-28
 REIL Rwy 10 and 28

SHEMYA I, ALEUTIAN I, ALASKA
 Amdt 7 05SEP24

52°43'N-174°07'E

EARECKSON AS (SYA) (PASY)

VOR/DME or TACAN RWY 28

AK, 20 FEB 2025 to 17 APR 2025

AK, 20 FEB 2025 to 17 APR 2025