

APP CRS	Rwy Idg	<b>4800</b>
<b>175°</b>	TDZE	<b>183</b>
	Apt Elev	<b>192</b>

# RNAV (GPS) RWY 18

ILIAMNA (ILI) (PAIL)

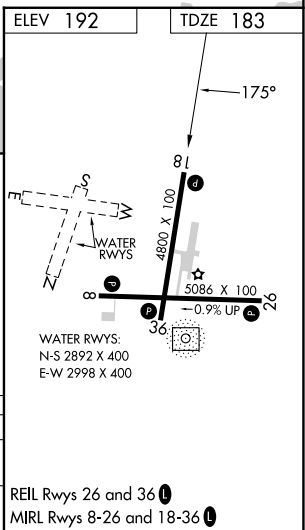
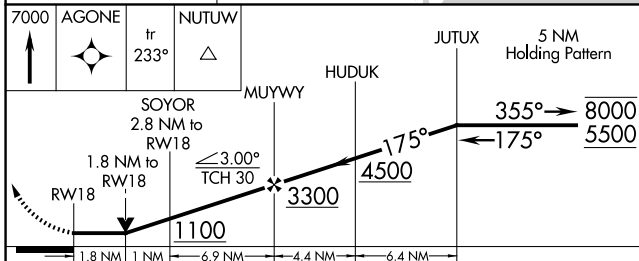
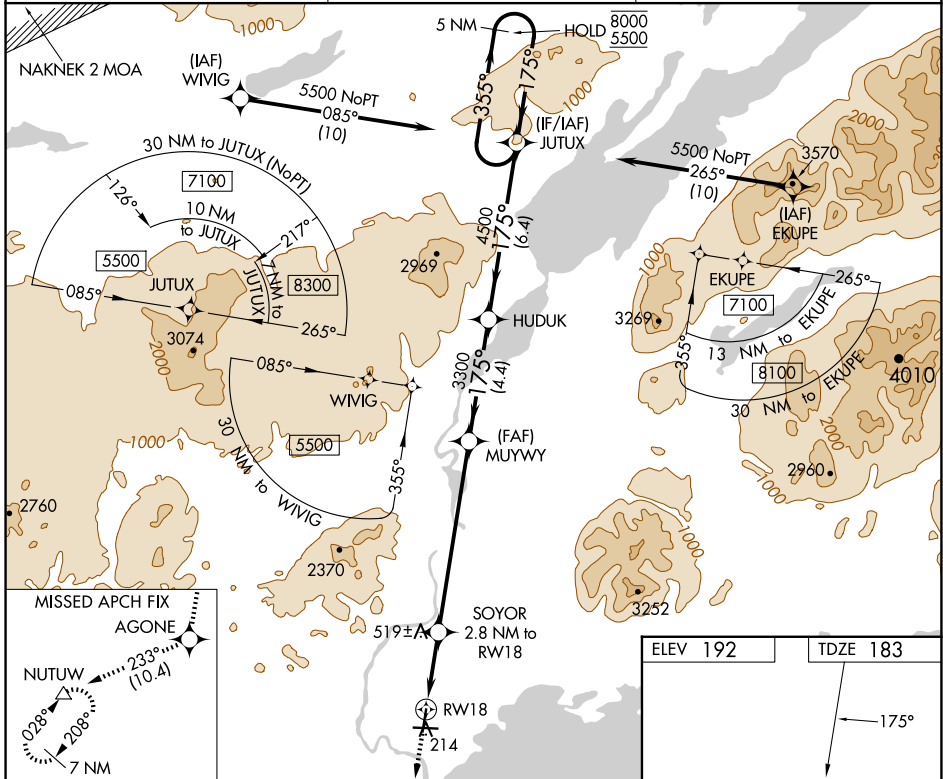
RNP APCH - GPS.

**▼** Rwy 18 helicopter visibility reduction below 3/4 SM NA. When Iliamna altimeter setting not received, procedure NA.

**⚠** -26°C Circling NA to waterways N, S, E, W.

MISSED APPROACH: Climb to 7000 direct AGONE and on track 233° to NUTUW and hold, continue climb-in-hold to 7000.

AFIS <b>134.95</b>	ANCHORAGE CENTER <b>118.8</b>	ILIAMNA RADIO <b>123.6 (CTAF) 0</b>
-----------------------	----------------------------------	--



CATEGORY	A	B	C	D
LNVA MDA	780-1 597 (600-1)		780-1 3/4 597 (600-1 3/4)	
<b>C</b> CIRCLING	780-1 588 (600-1)		820-1 3/4 628 (700-1 3/4)	1700-3 1508 (1600-3)

REL Rwy 26 and 36 **0**  
MRL Rwy 8-26 and 18-36 **0**

AK, 20 FEB 2025 to 17 APR 2025

AK, 20 FEB 2025 to 17 APR 2025