

# FFITZ FOUR DEPARTURE (RNAV)

AK, 20 FEB 2025 to 17 APR 2025

**TOP ALTITUDE:**  
10000

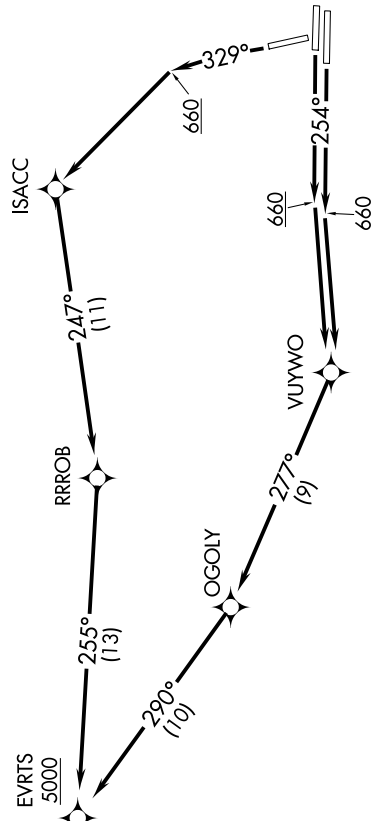
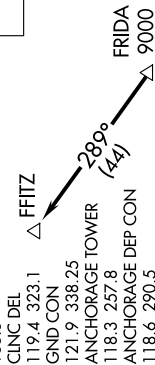
D-ATIS  
135.5  
CLNC DEL  
119.4 323.1  
GND CON  
121.9 338.25  
ANCHORAGE TOWER  
118.3 257.8  
ANCHORAGE DEP CON  
118.6 290.5

## DEPARTURE ROUTE DESCRIPTION

**TAKEOFF RUNWAYS 25L/R:** Climb on heading 254° to at or above 660, then climb direct VUYWO, and on track 277° to OGOLY, and on track 290° to cross EVRTS at or above 5000, thence . . . .

**TAKEOFF RUNWAY 33:** Climb on heading 329° to at or above 660, then climb direct ISACC, and on track 247° to RRROB, and on track 255° to cross EVRTS at or above 5000, thence . . . .

. . . . continue climb on track 310° to DCSIX, and on track 313° to cross FRIDA at or above 9000, and on track 289° to FFITZ. Maintain 10000 or as assigned by ATC.



### TAKEOFF MINIMUMS

Rwys 7L/R, 15: NA-Air Traffic.  
Rwys 25L/R, 33: Standard.

NOTE: Propeller-driven aircraft only.

NOTE: GPS required.

NOTE: RADAR required.

NOTE: RNAV-1.

NOTE: Chart not to scale.

AK, 20 FEB 2025 to 17 APR 2025