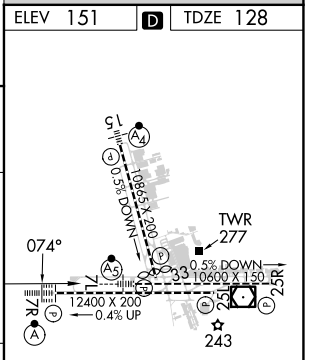
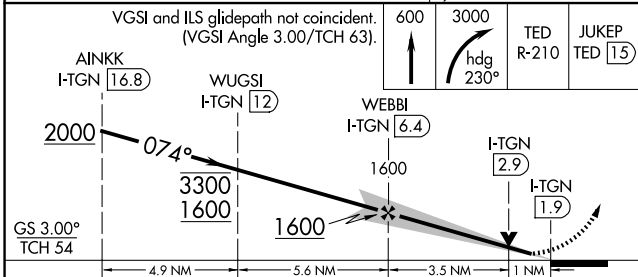
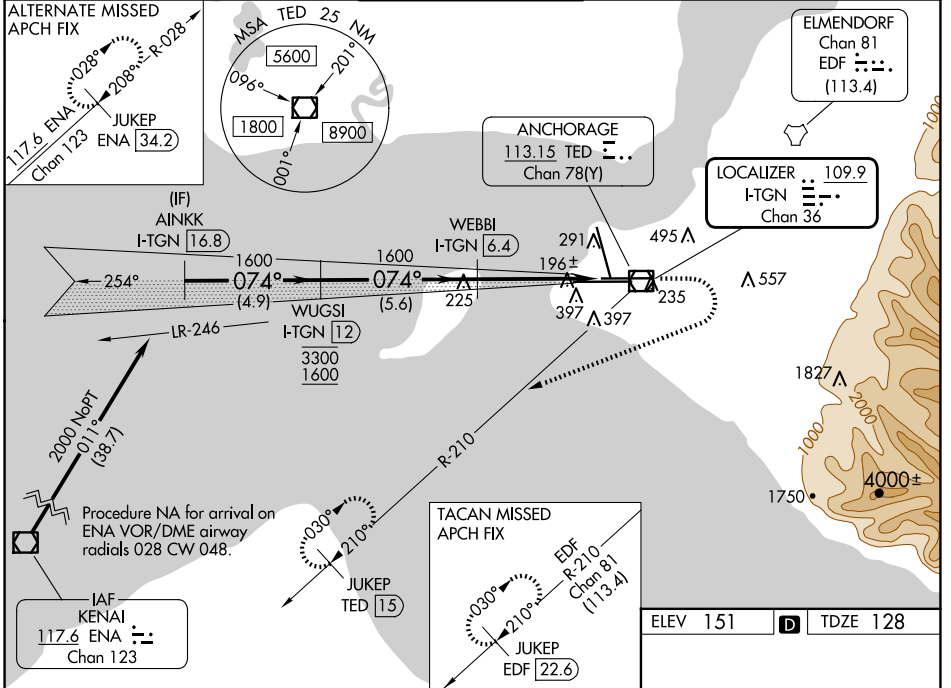


LOC/DME I-TGN 109.9 Chan 36	APP CRS 074°	Rwy Idg 10600 TDZE 128 Apt Elev 151
---	------------------------	--

ILS or LOC RWY 7L

TED STEVENS ANCHORAGE INTL (ANC)(PANC)

DME required.		MALSR 	MISSED APPROACH: Climb to 600 then climbing right turn to 3000 on heading 230° and TED VOR/DME R-210 to JUKEP/TED 15 DME and hold. (TACAN aircraft climb to 600 then climbing right turn to 3000 on heading 230° on EDF TACAN R-210 to JUKEP/EDF 22.6 DME and hold).		
 For inop ALS, increase S-ILS 7L Cat E visibility to RVR 4000, S-LOC 7L Cats C, D and E visibility to RVR 5500.					
D-ATIS 135.5	ANCHORAGE APP CON 118.6 290.5	ANCHORAGE TOWER 118.3 257.8	GND CON 121.9 338.25	CLNC DEL 119.4 323.1	



CATEGORY	A	B	C	D	E
S-ILS 7L	328/18 200 (200-1/2)				
S-LOC 7L	500/24	372 (400-1/2)	500/30 372 (400-3/4)		
CIRCLING	700-1	549 (600-1)	800-1 3/4 649 (700-1 3/4)	920-2 1/2 769 (800-2 1/2)	920-2 3/4 769 (800-2 3/4)

REIL Rwy 33
TDZ/CL Rwys 7L and 7R
HIRL all Rwys

AK, 20 FEB 2025 to 17 APR 2025

AK, 20 FEB 2025 to 17 APR 2025