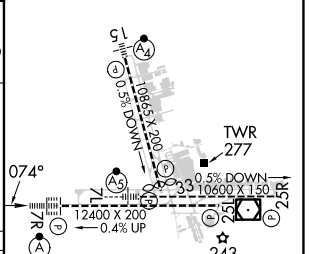
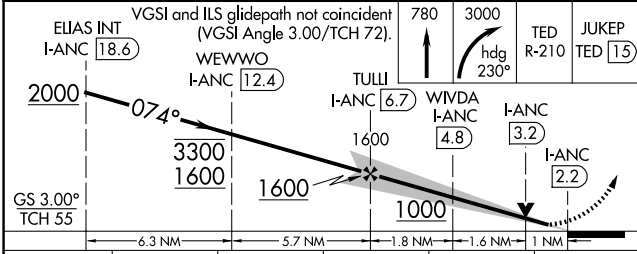
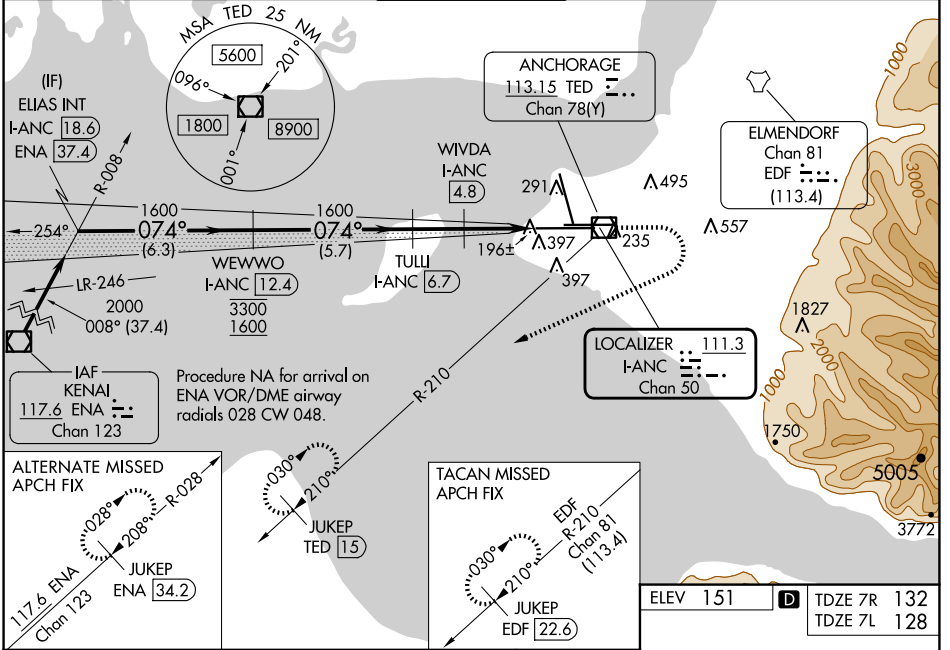


LOC/DME I-ANC <b>111.3</b> Chan <b>50</b>	APP CRS <b>074°</b>	Rwy ldg <b>12400</b>	7R <b>132</b>	7L <b>128</b>	10600 <b>128</b>	151 <b>151</b>
DME required.		MISSED APPROACH: Climb to 780 then climbing right turn to 3000 on heading 230° and on TED VOR/DME R-210 to JUKEP/TED 15 DME and hold. (TACAN aircraft climb to 780 then climbing right turn to 3000 on heading 230° and EDF TACAN R-210 to JUKEP/EDF 22.6 DME and hold).				

# ILS or LOC RWY 7R

TED STEVENS ANCHORAGE INTL (ANC) (PANC)

D-ATIS <b>135.5</b>	ANCHORAGE APP CON <b>118.6 290.5</b>	ANCHORAGE TOWER <b>118.3 257.8</b>	GND CON <b>121.9 338.25</b>	CLNC DEL <b>119.4 323.1</b>
------------------------	---	---------------------------------------	--------------------------------	--------------------------------



CATEGORY	A	B	C	D	E
S-ILS 7R	332/18 200 (200-½)				
S-LOC 7R	520/24	388 (400-½)	520/35 388 (400-¾)		
SIDESTEP 7L	520/55 392 (400-1)		520-1½ 392 (400-1½)		
CIRCLING	700-1 549 (600-1)	800-1¾ 649 (700-1¾)	920-2½ 769 (800-2½)	920-2¾ 769 (800-2¾)	

REIL Rwy 33  
TDZ/CL Rwy 7L and 7R  
HIRL all Rwy

AK, 20 FEB 2025 to 17 APR 2025

AK, 20 FEB 2025 to 17 APR 2025