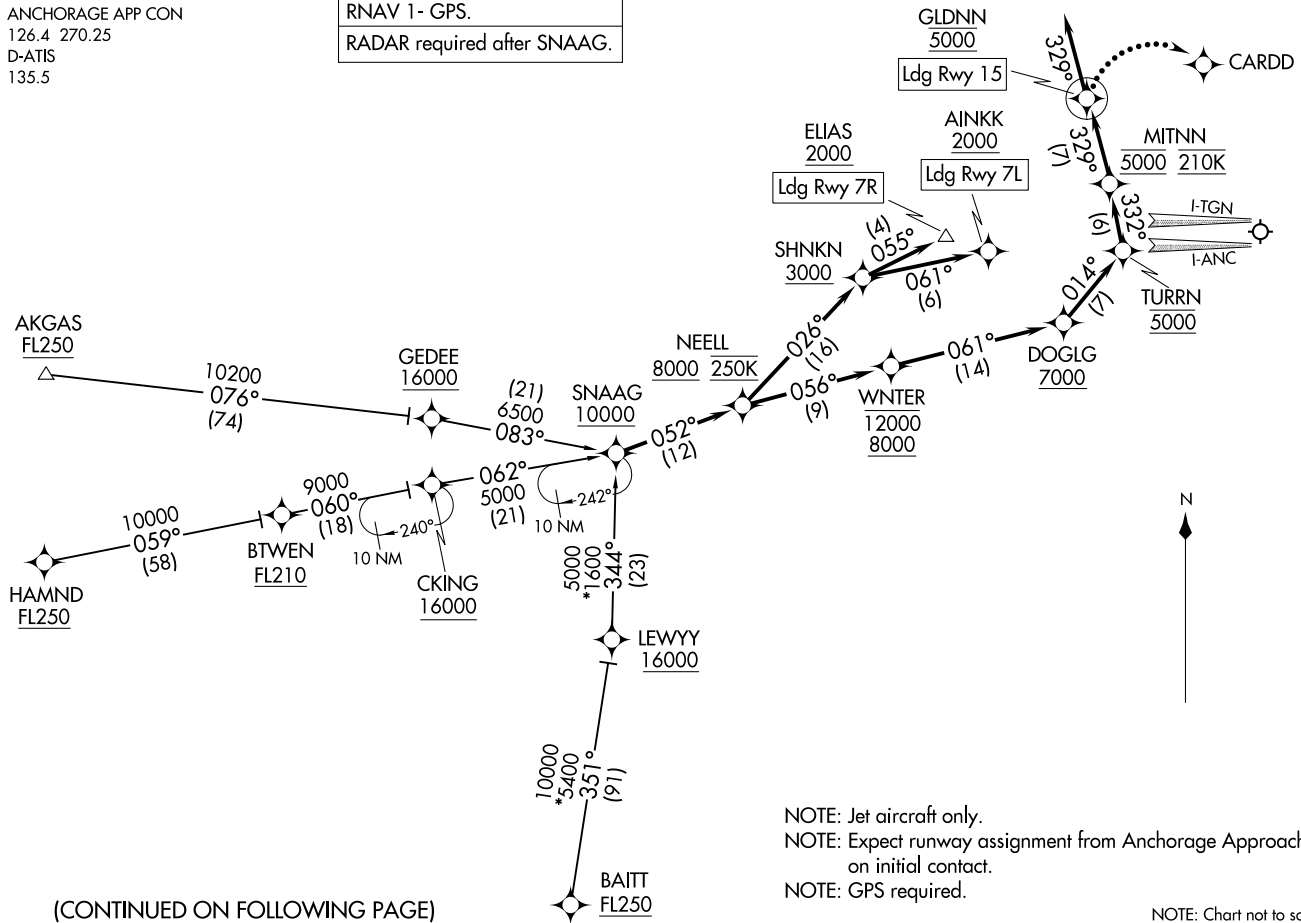


NEELL SEVEN ARRIVAL (RNAV)  
(SNAAG, NEELL) 31OCT24

TED STEVENS ANCHORAGE INTL (AN)(P)AN(C)  
ANCHORAGE, ALASKA

ANCHORAGE APP CON  
126.4 270.25  
D-ATIS  
135.5

RNAV 1- GPS.  
RADAR required after SNAAG.



(CONTINUED ON FOLLOWING PAGE)

NOTE: Jet aircraft only.  
NOTE: Expect runway assignment from Anchorage Approach on initial contact.  
NOTE: GPS required.

NOTE: Chart not to scale.

(SNAAG, NEELL) 24305  
NEELL SEVEN ARRIVAL (RNAV)

TED STEVENS ANCHORAGE INTL (AN)(P)AN(C)  
ANCHORAGE, ALASKA  
AL-1500 (FAA)

ARRIVAL ROUTE DESCRIPTION

AKGAS TRANSITION (AKGAS.NEELL7)

BAITT TRANSITION (BAITT.NEELL7)

HAMND TRANSITION (HAMND.NEELL7)

From SNAAG on track 052° to cross NEELL at or above 8000 and at 250K.

LANDING RUNWAY 7L: From NEELL on track 026° to cross SHNKN at or above 3000, then on track 061° to cross AINKK at or above 2000. Expect ILS or LOC RWY 7L approach.

LANDING RUNWAY 7R: From NEELL on track 026° to cross SHNKN at or above 3000, then on track 055° to cross ELIAS at or above 2000. Expect ILS or LOC RWY 7R approach.

LANDING RUNWAY 15: From NEELL on track 056° to cross WNTER between 8000 and 12000, then on track 061° to cross DOGLG at or above 7000, then on track 014° to cross TURRN at 5000, then on track 332° to cross MITNN at 5000 and at 210K, then on track 329° to cross GLDNN at 5000, then on track 329°. Expect RADAR vectors to final approach course.

LOST COMMUNICATIONS

RUNWAY 15: After GLDNN, turn right to CARDD, then proceed on the ILS RWY 15 approach.

AK, 20 FEB 2025 to 17 APR 2025

AK, 20 FEB 2025 to 17 APR 2025