

MILTON, FLORIDA

# ILS Y or LOC Y RWY 32

LOC/DME I-NDZ	APCH CRS	Rwy Ldg TDZE	6002
110.55	319°	Arprt Elev	177
Chan 42(Y)			

AL-1909 [UNJ]

WHITING FLD NAS - SOUTH (KNDZ)

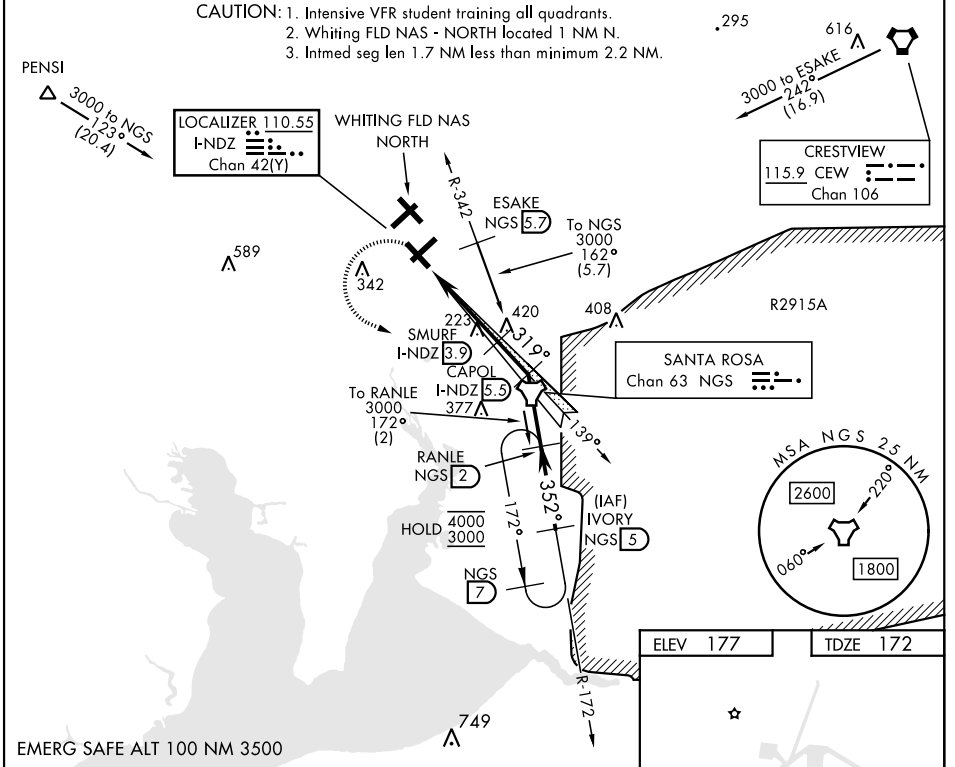
TACAN, DME required.

▼ \* When ALS inop, increase vis to ¾ mile.  
 \*\* When ALS inop, increase vis to 1 mile.  
 \*\*\* Circling not authorized N of Rwy 14 and 23.

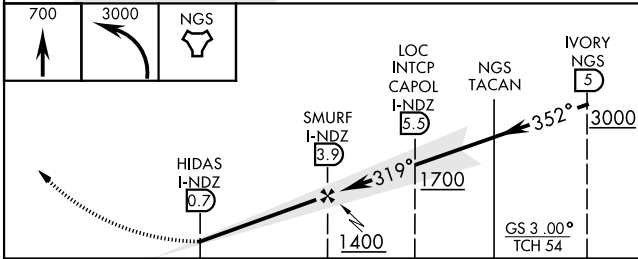
MALSRL (AS) MISSED APPROACH: Climb to 700, then climbing left turn to 3000 direct NGS TACAN. Then via R-172 to RANLE and hold continue climb in hold. Contact Pensacola Approach Control.

ATIS	PENSACOLA APP CON	SOUTH WHITING TOWER	GND CON	CLNC DEL	ASR/PAR
273.575	124.85 235.775	123.075 348.675	317.65	355.6	

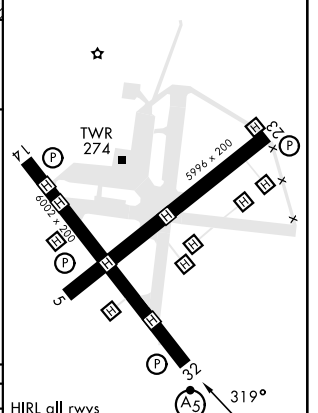
CAUTION: 1. Intensive VFR student training all quadrants.  
 2. Whiting FLD NAS - NORTH located 1 NM N.  
 3. Intmed seg len 1.7 NM less than minimum 2.2 NM.



EMERG SAFE ALT 100 NM 3500



ELEV 177	TDZE 172
----------	----------



CATEGORY	A	B	C	D
S-ILS 32*		372-½	200 (200-½)	
S-LOC 32**		480-½	308 (400-½)	
CIRCLING***	580-1 403 (500-1)	640-1 463 (500-1)	660-1½ 483 (500-1½)	740-2 563 (600-2)

FAF to MAP 3.2 NM					
Knots	60	90	120	150	180
Min:Sec	3:12	2:08	1:36	1:17	1:04

MILTON, FLORIDA

30°42'N-87°01'W

WHITING FLD NAS - SOUTH (KNDZ)

Orig 10AUG23

# ILS Y or LOC Y RWY 32

SE-3, 20 FEB 2025 to 20 MAR 2025

SE-3, 20 FEB 2025 to 20 MAR 2025