

MILTON, FLORIDA

# TACAN RWY 32

TACAN NGS Chan 63	APCH CRS 322°	Rwy ldg TDZE Arprt Elev	6002 172 177
----------------------	------------------	-------------------------------	--------------------

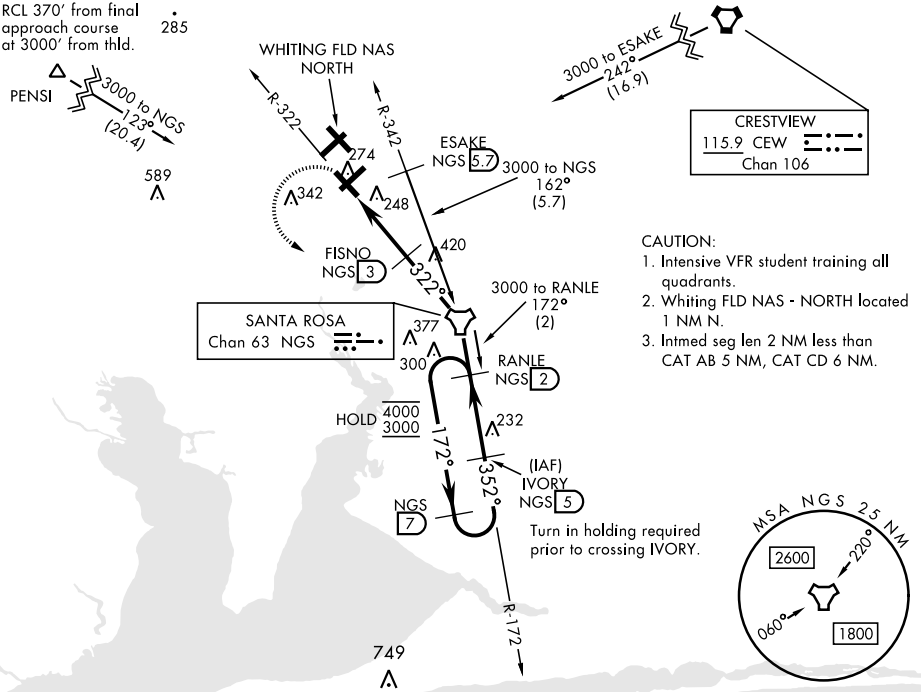
[USN]

WHITING FLD NAS - SOUTH (KNDZ)

▼ \* When ALS inop, increase vis to 1 mile.  
\*\* Circling not authorized N of Rwy 14 and 23.

MALSR MISSED APPROACH: Climb to 600, then climbing left turn to 3000 direct NGS TACAN. Then via R-172 to RANLE and hold. Continue climb in hold. Contact Pensacola APP CON.

ATIS ★ 273.575	PENSACOLA APP CON 124.85 235.775	SOUTH WHITING TOWER ★ 123.075 348.675	GND CON 317.65	CLNC DEL 355.6	ASR/ PAR
-------------------	-------------------------------------	--	-------------------	-------------------	-------------

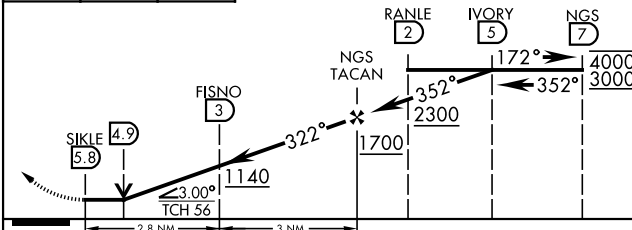
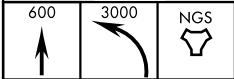


SE-3, 20 FEB 2025 to 20 MAR 2025

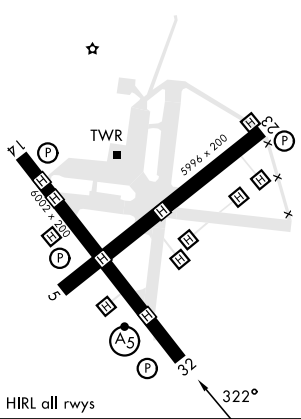
SE-3, 20 FEB 2025 to 20 MAR 2025

EMERG SAFE ALT 100 NM 3500

ELEV 177	TDZE 172
----------	----------



CATEGORY	A	B	C	D
S-32 *	540-½ 368	400-½	540-⅝ 368	400-⅝
** CIRCLING	580-1 403 (500-1)	640-1 463 (500-1)	660-1½ 483 (500-1½)	740-2 563 (600-2)



MILTON, FLORIDA

30° 42' N - 87° 01' W

WHITING FLD NAS - SOUTH (KNDZ)

Amtd 6 28DEC23

# TACAN RWY 32