

LOC/DME I-OTZ <b>110.7</b> Chan <b>44</b>	APP CRS <b>089°</b>	Rwy Idg TDZE Apt Elev	<b>5900</b> <b>13</b> <b>15</b>
---	------------------------	-----------------------------	---------------------------------------

# ILS or LOC RWY 9

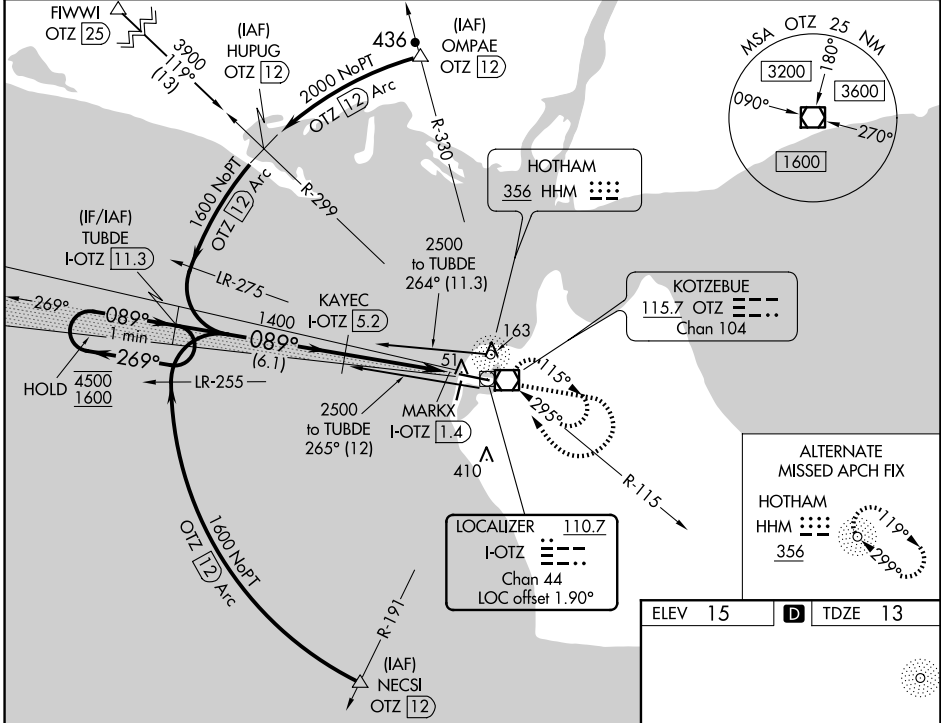
RALPH WIEN MEML (OTZ) (PAOT)

DME required.

**⚠** Circling Rwy 18, 36 NA at night, Circling Rwy 27 at night, operational VGS1 required, remain on or above VGS1 glidepath until threshold. Rwy 9 helicopter visibility reduction below RVR 4000 NA.

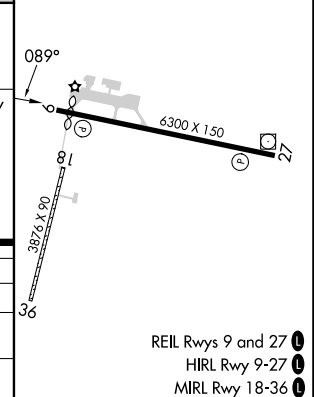
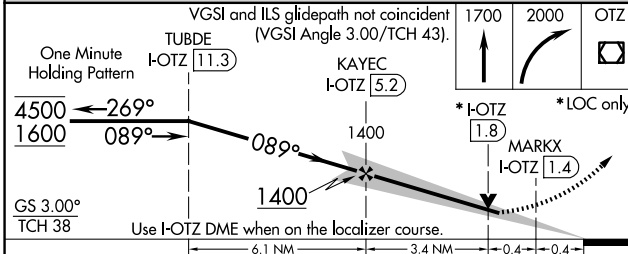
MISSED APPROACH: Climb to 1700 then climbing right turn to 2000 direct OTZ VOR/DME and hold, continue climb-in-hold to 2000.

AFIS <b>135.45</b>	ANCHORAGE CENTER <b>119.2 263.0</b>	KOTZEBUE RADIO <b>123.6 (CTAF) 0</b>
-----------------------	--	---



AK, 20 FEB 2025 to 17 APR 2025

AK, 20 FEB 2025 to 17 APR 2025



CATEGORY	A	B	C	D
S-ILS 9	263/50		250 (300-1)	
S-LOC 9	320/55	307 (400-1)	320/50	307 (400-1)
<b>C</b> CIRCLING	520-1	505 (600-1)	720-2 705 (800-2)	720-2¼ 705 (800-2¼)