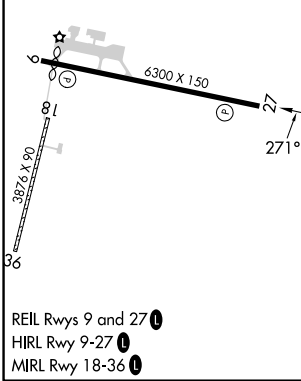
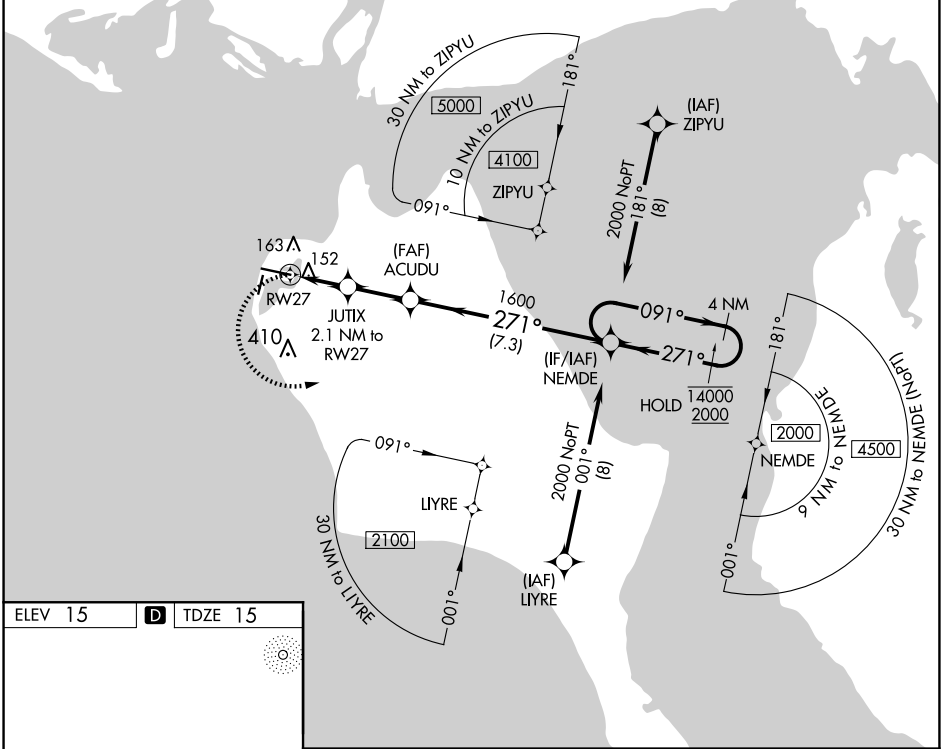


APP CRS	Rwy Idg	5900
271°	TDZE	15
	Apt Elev	15

RNAV (GPS) RWY 27
RALPH WIEN MEML (OTZ) (PAOT)

RNP APCH.	<p>⚠ Circling Rwy 18, 36 NA at night. Rwy 27 helicopter visibility reduction below 1 SM NA. Straight-in Rwy 27 NA at night, Circling Rwy 27 at night, operational VGSI required, remain on or above VGSI glidepath until threshold.</p>	<p>MISSED APPROACH: Climbing left turn to 2000 direct NEMDE and hold.</p>
-----------	---	---

AFIS 135.45	ANCHORAGE CENTER 119.2 263.0	KOTZEBUE RADIO 123.6 (CTAF) 0
-----------------------	--	---



2000	NEMDE	4 NM Holding Pattern			
JUTIX 2.1 NM to RWY 27	ACUDU	NEMDE			
RWY 27	3.30° TCH 47'	271°	091° →	← 271°	14000 2000
→ 2.1 NM		→ 2.3 NM		→ 7.3 NM	
CATEGORY	A	B	C	D	
LNAV MDA	420-1	405 (500-1)	420-1½	405 (500-1½)	
C CIRCLING	520-1	505 (600-1)	720-2 705 (800-2)	720-2¼ 705 (800-2¼)	

AK, 20 FEB 2025 to 17 APR 2025

AK, 20 FEB 2025 to 17 APR 2025